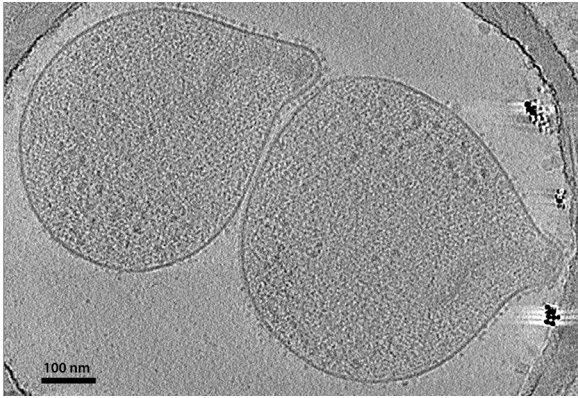


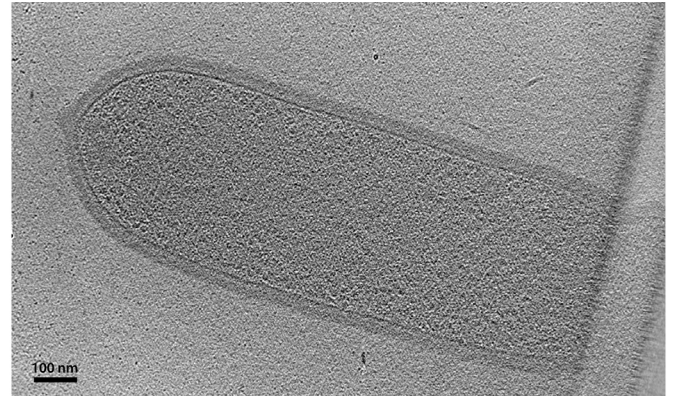
Review Pack

The Atlas of Bacterial & Archaeal Cell Structure

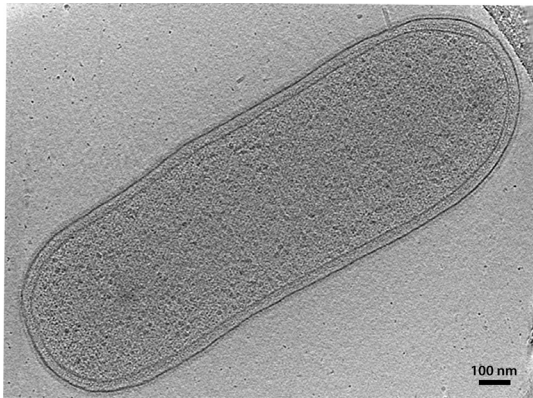
This study aid is taken from the multimedia digital textbook available at
<https://cellstructureatlas.org>



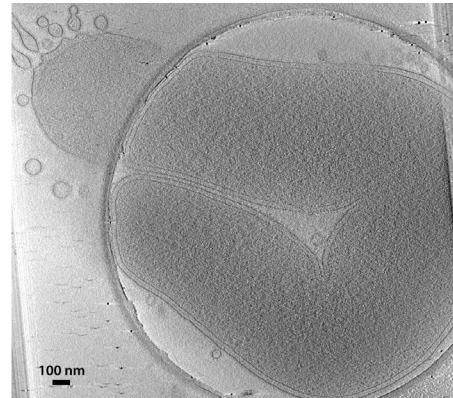
Identify: membrane



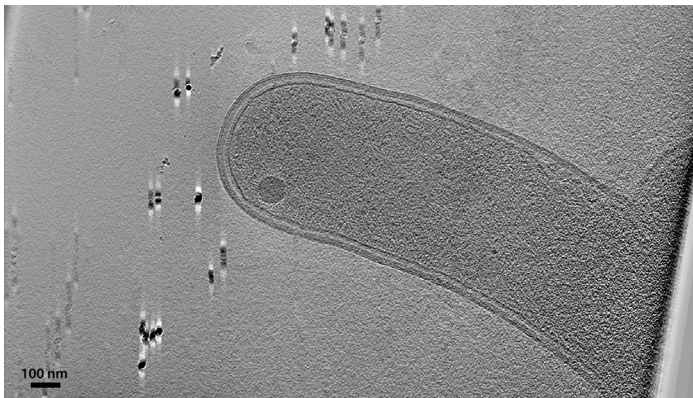
Identify: (1) membrane; (2) cell wall



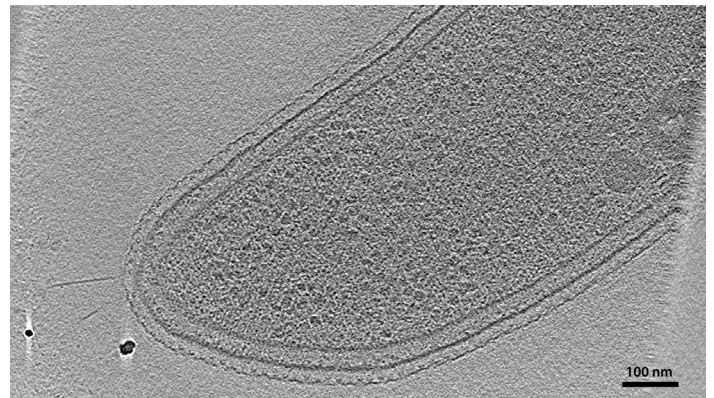
Identify: (1) inner membrane; (2) cell wall; (3) outer membrane



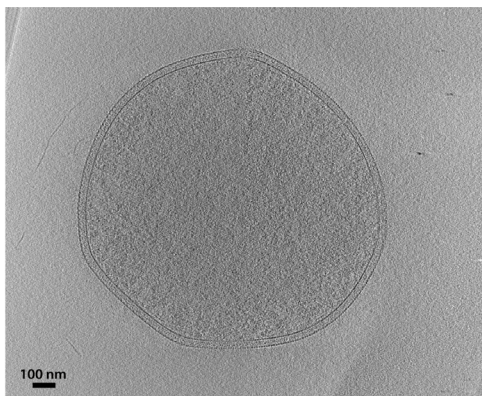
Identify: outer membrane vesicles



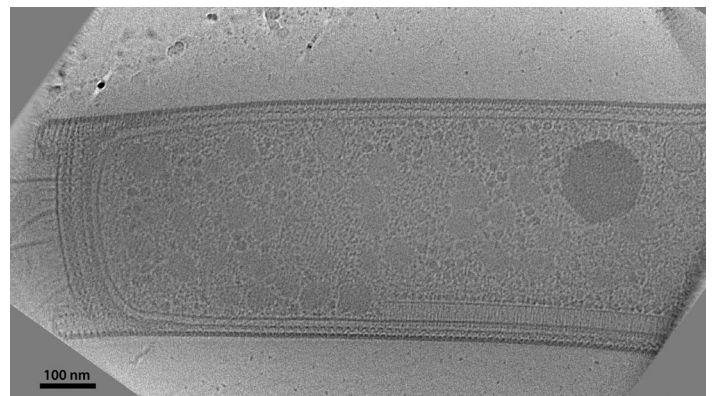
Identify: (1) inner membrane; (2) cell wall; (3) outer membrane



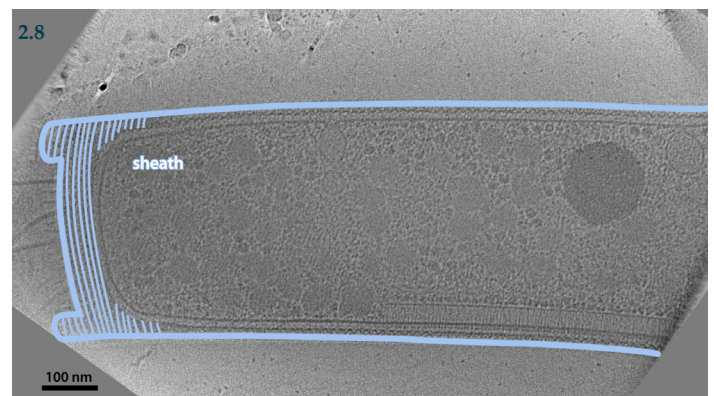
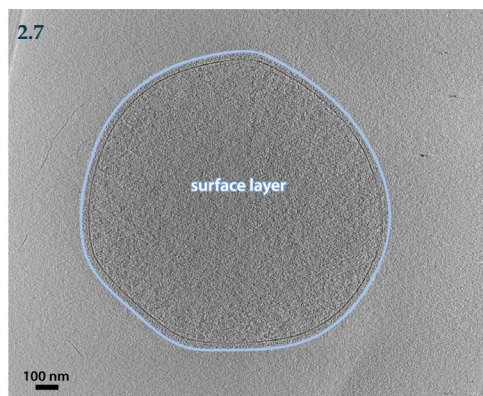
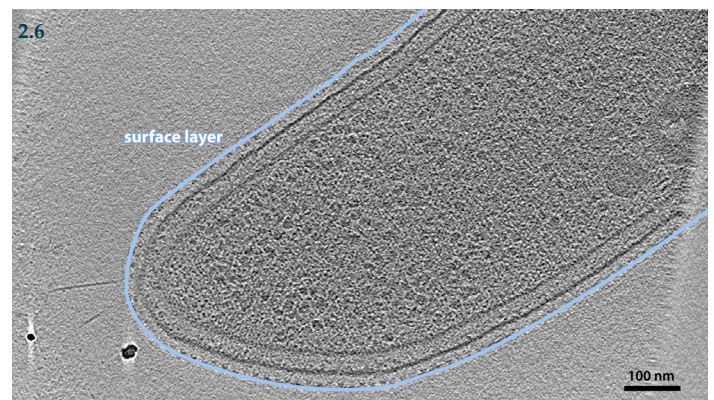
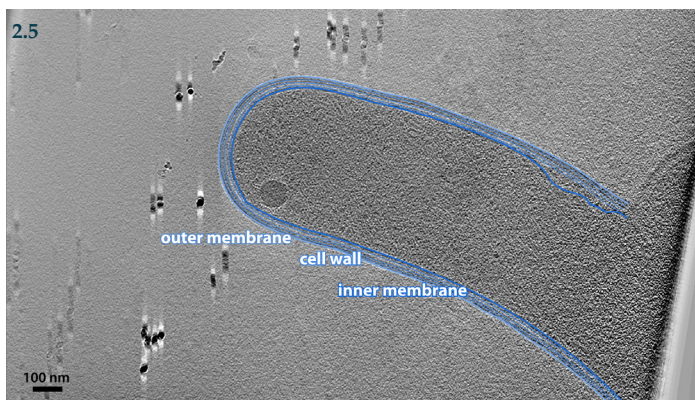
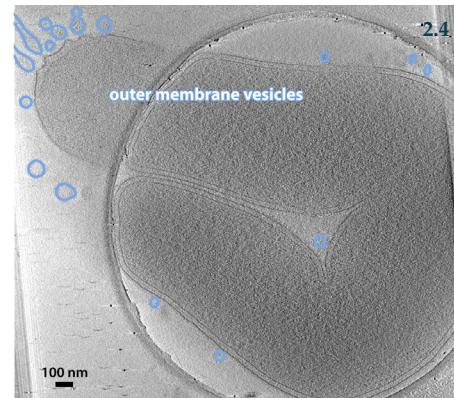
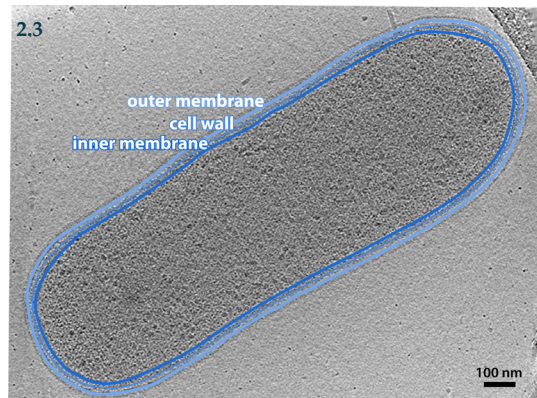
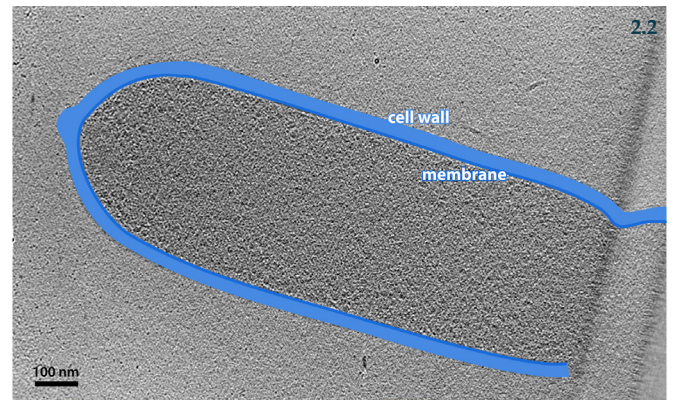
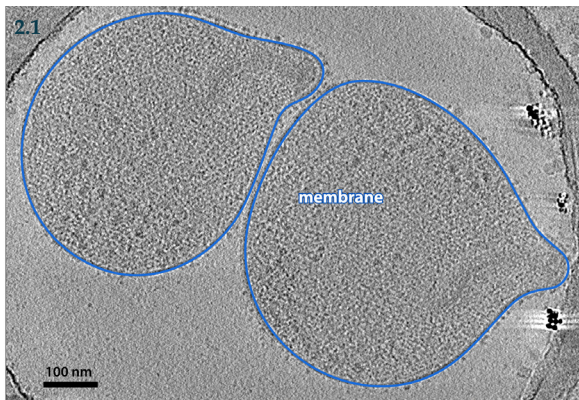
Identify: surface layer

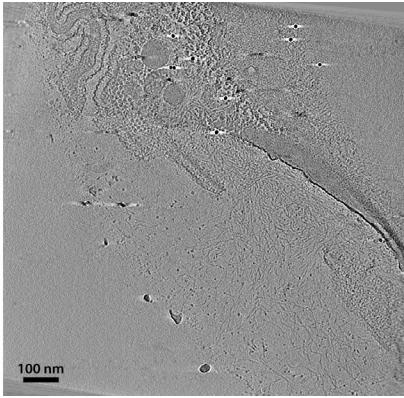


Identify: surface layer

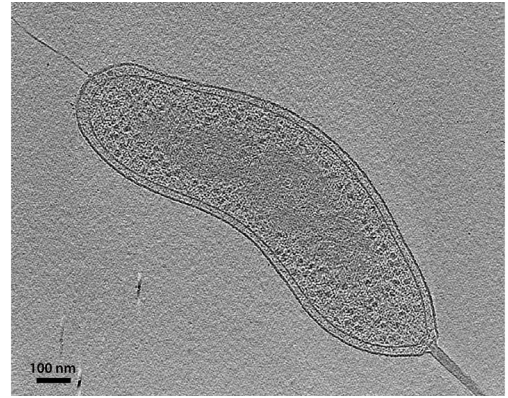


Identify: sheath

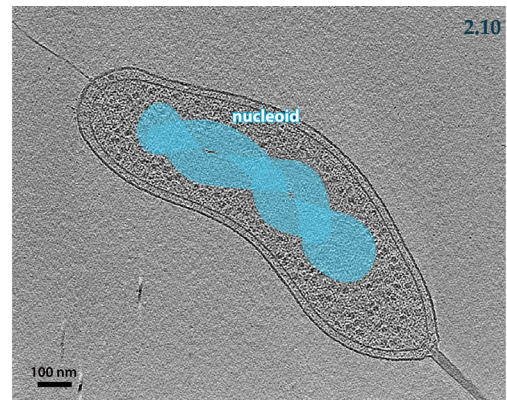
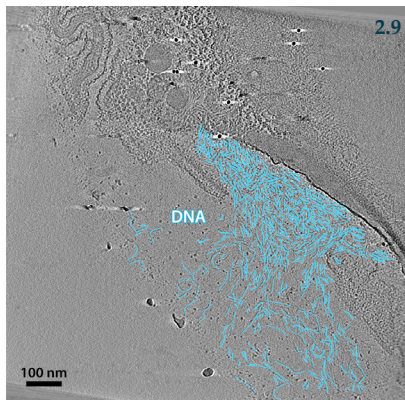


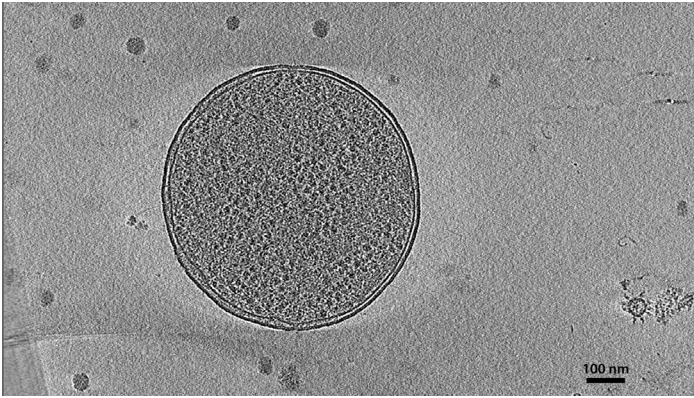


Identify: DNA

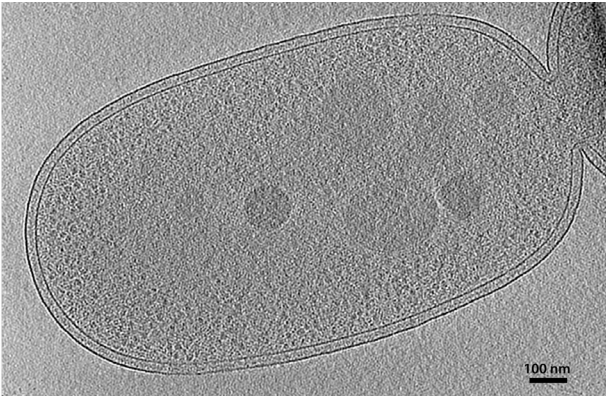


Identify: nucleoid

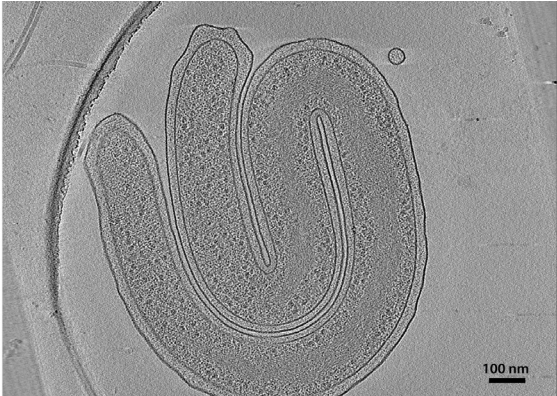




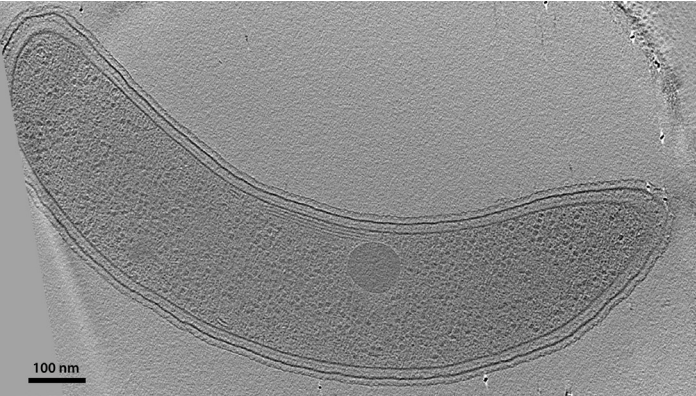
What shape?



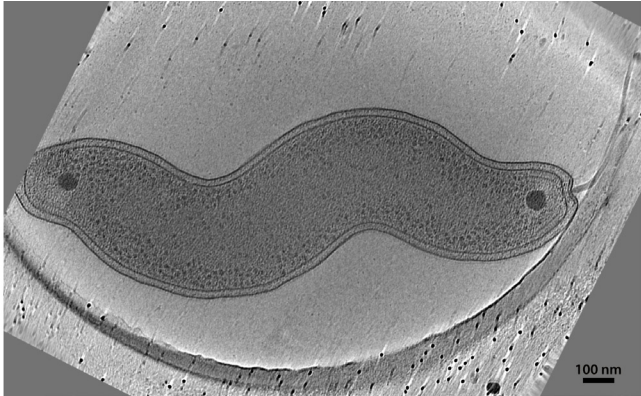
What shape?



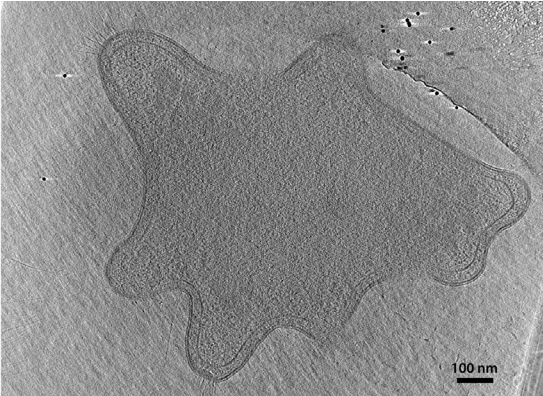
What shape?



(1) What shape? (2) Identify: CTP synthase filaments



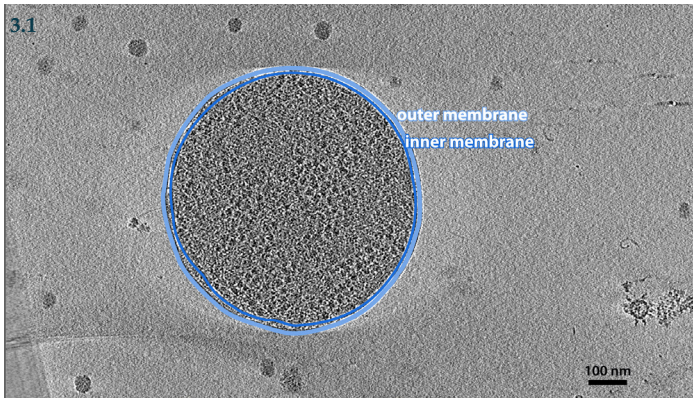
What shape?



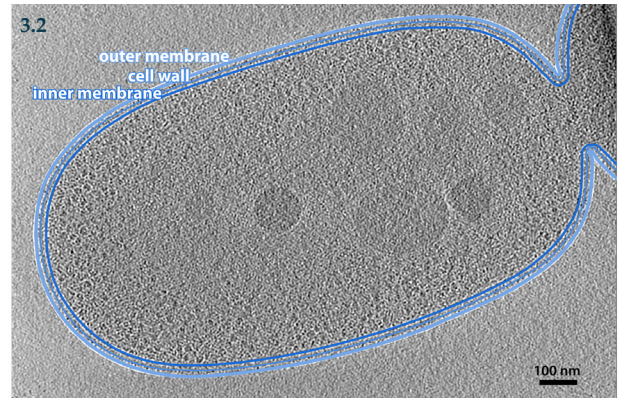
What shape?



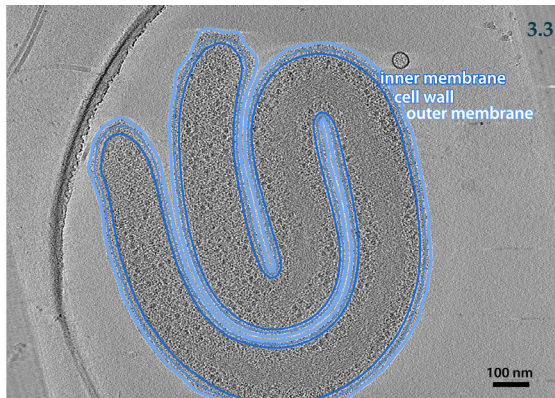
(1) What shape? (2) Identify: gas vesicle



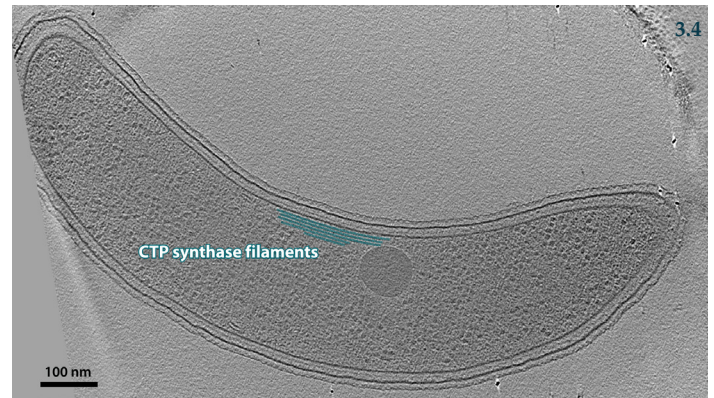
Shape: coccoid



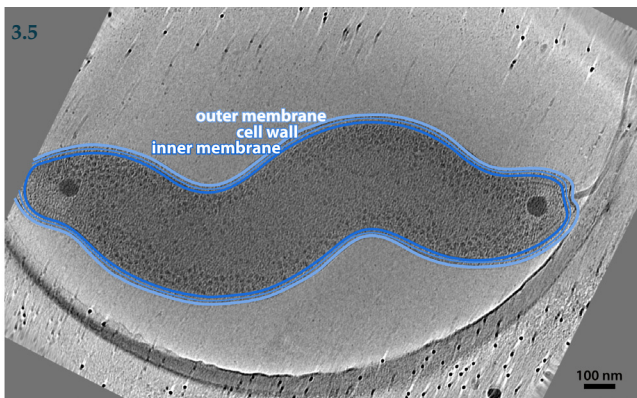
Shape: rod



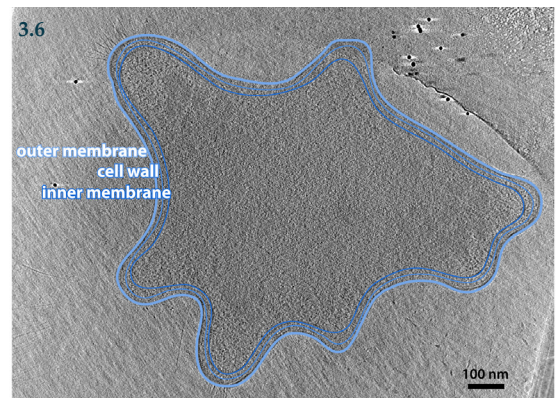
Shape: rod



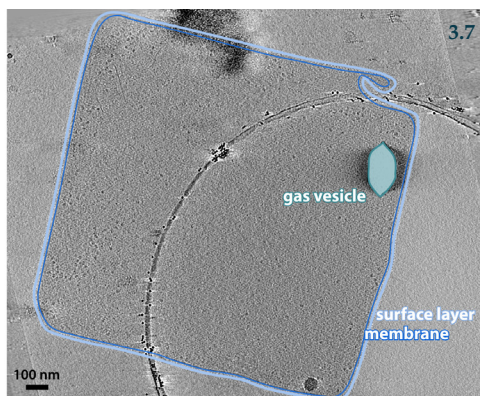
Shape: vibrioid



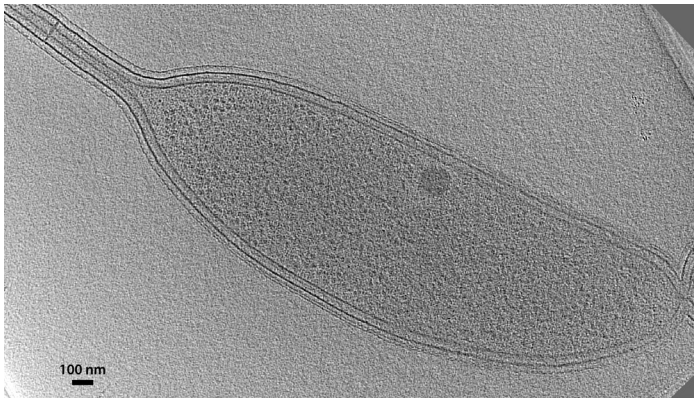
Shape: helical



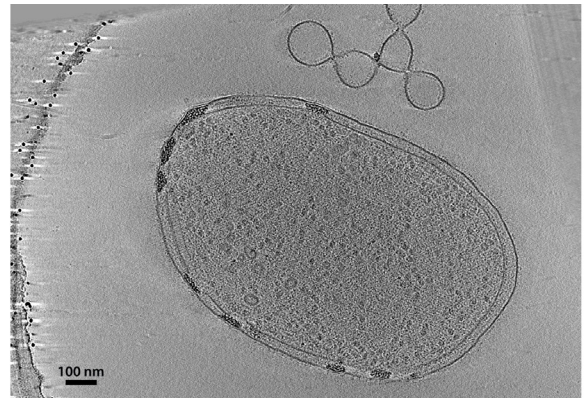
Shape: prosthecate



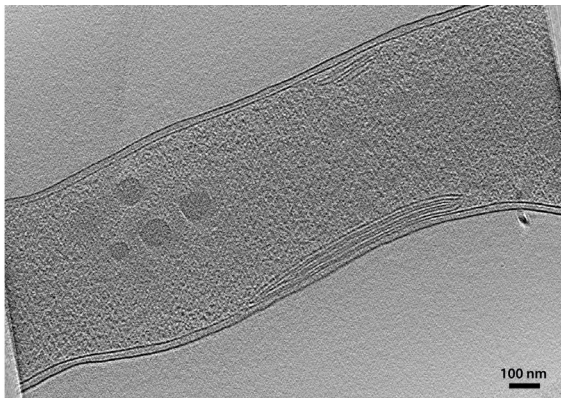
Shape: square



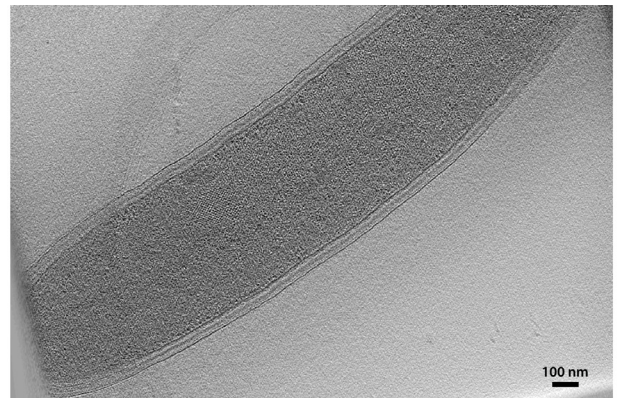
Identify: stalk band



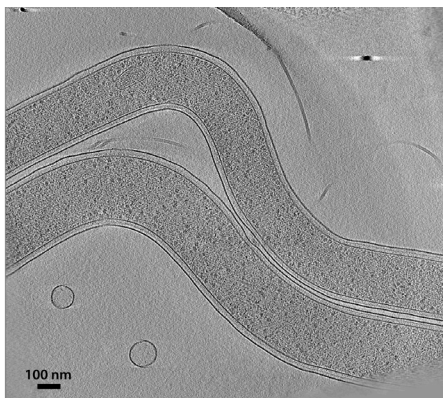
Identify: (1) metal deposits; (2) nanowire; (3) cytochromes



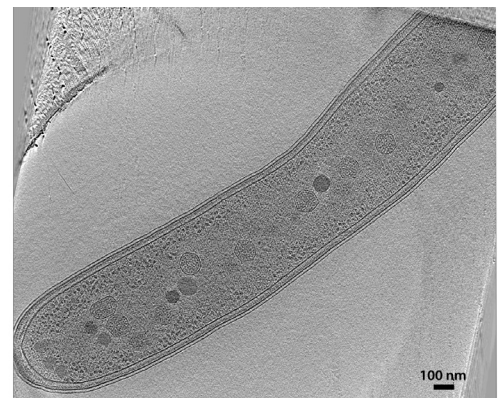
Identify: intracytoplasmic membrane



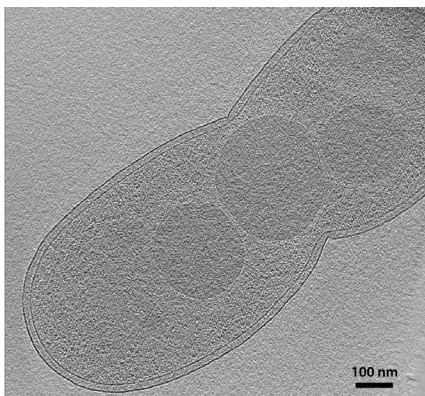
Identify: AdhE spirosomes



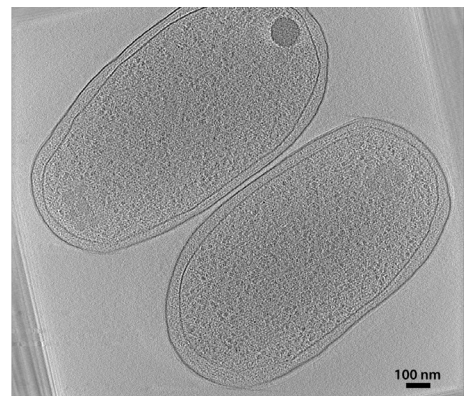
Identify: Pdu microcompartment



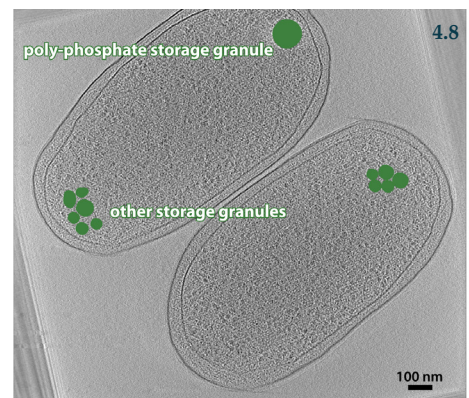
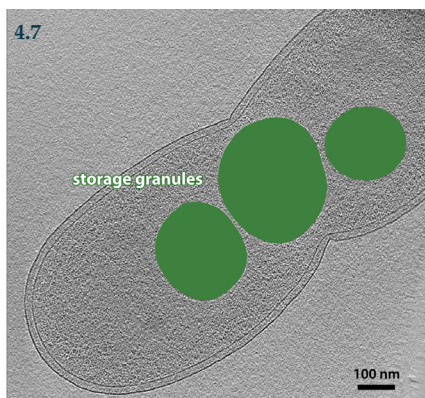
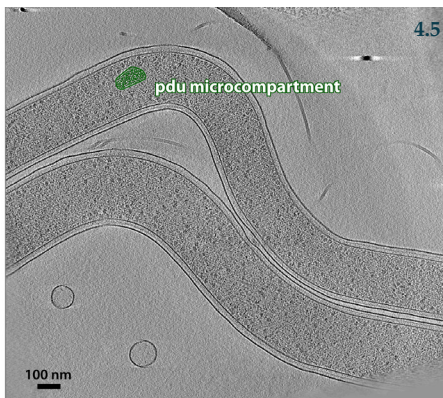
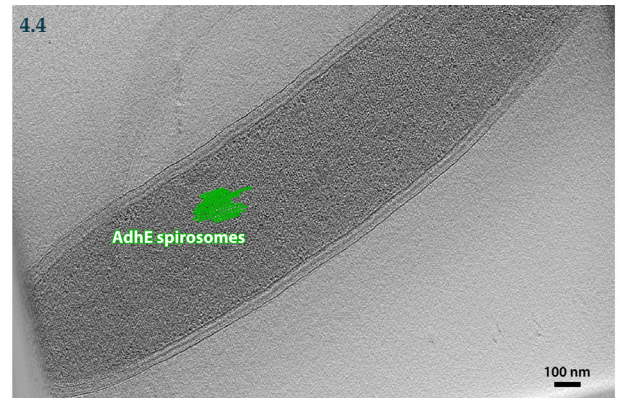
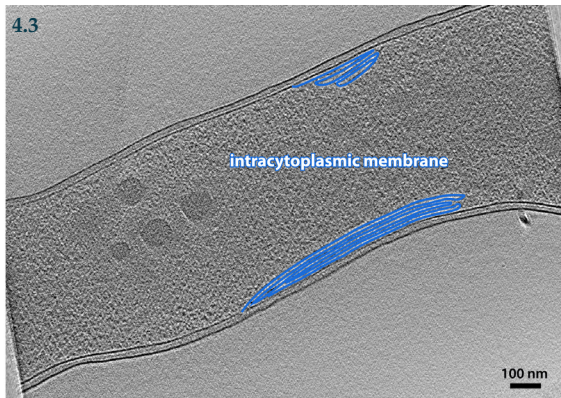
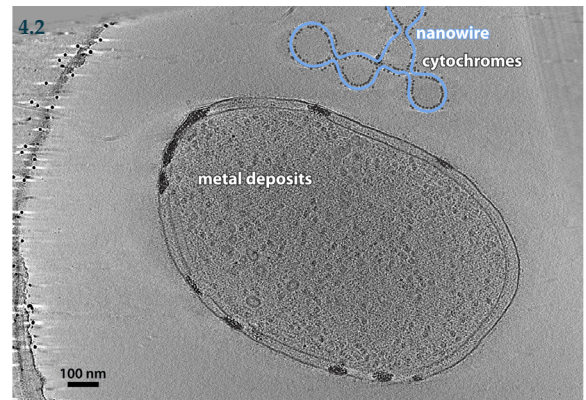
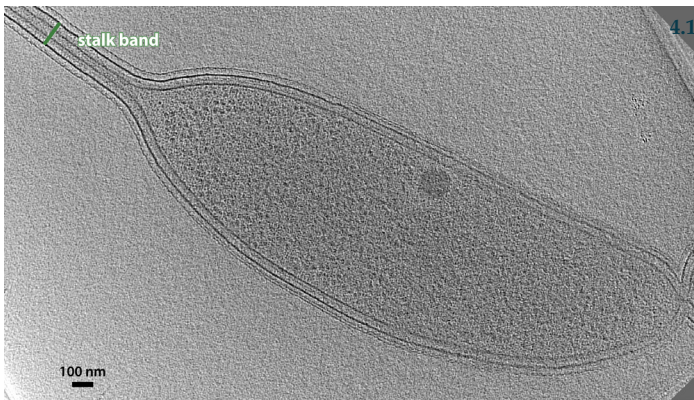
Identify: carboxysomes

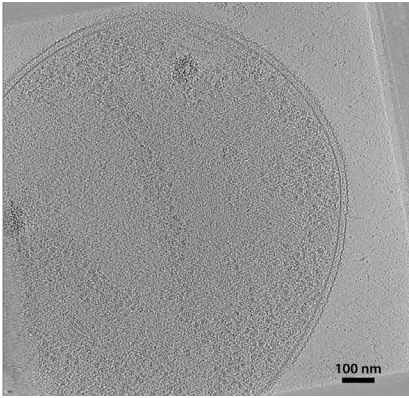


Identify: storage granules



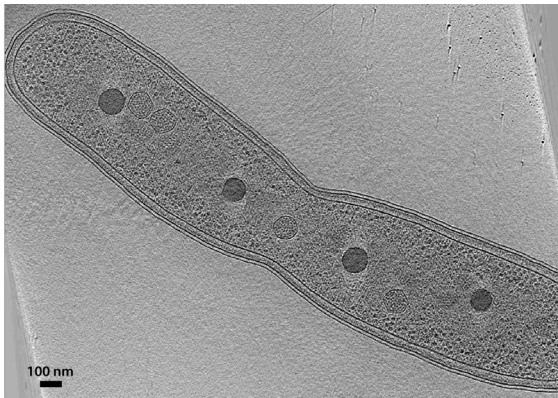
Identify: (1) poly-phosphate granules; (2) other storage granules



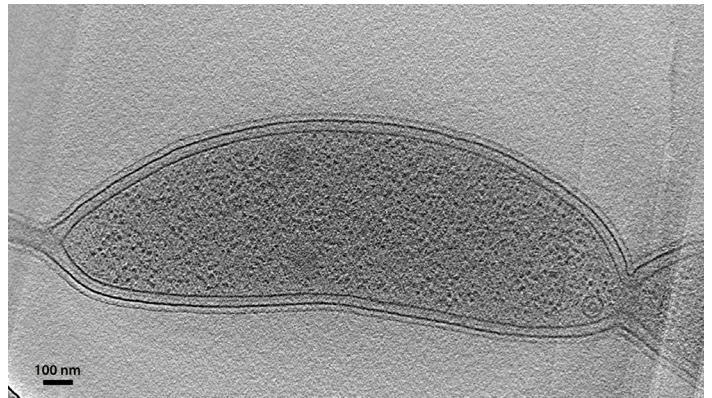


Identify: storage granules

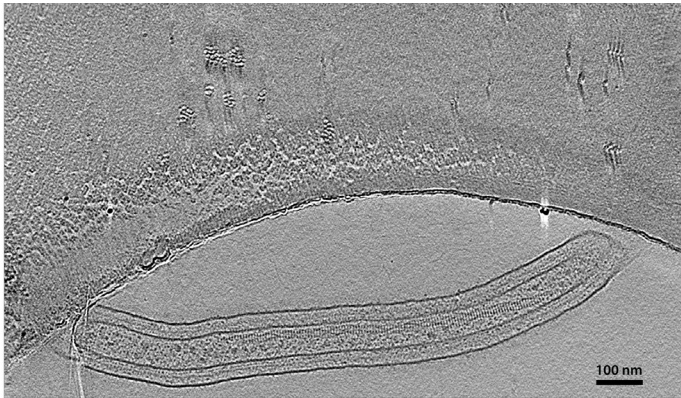




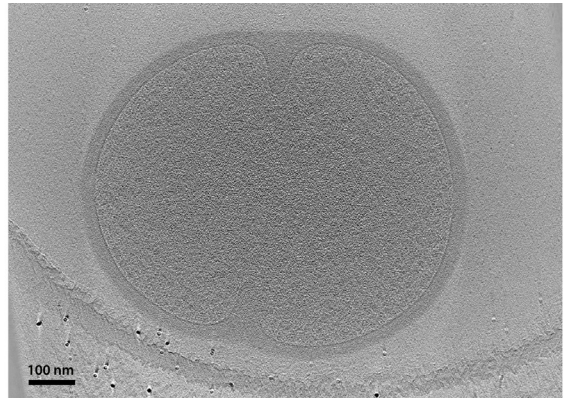
Identify: division plane



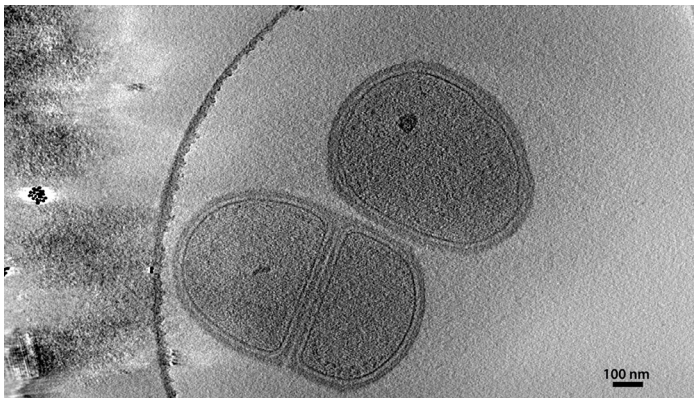
Identify: (1) PopZ; (2) division plane



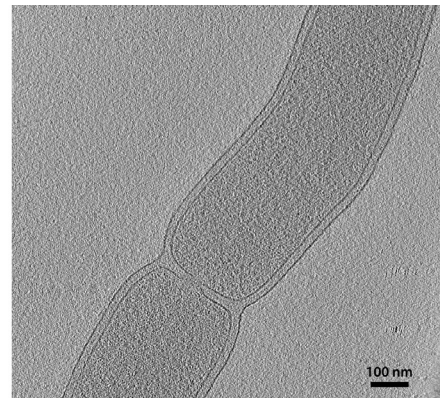
Identify: supercoiled DNA



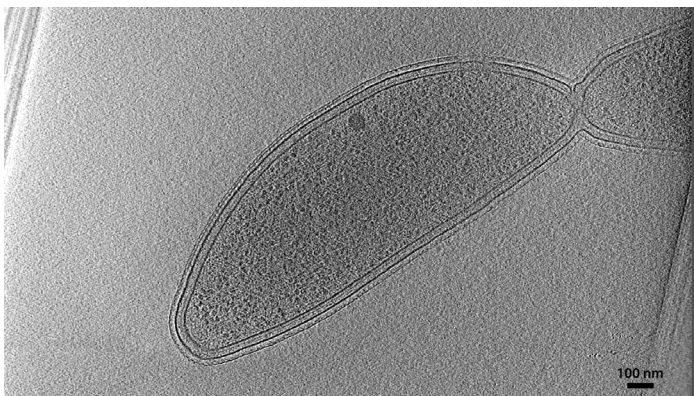
Identify: (1) division plane; (2) division septum



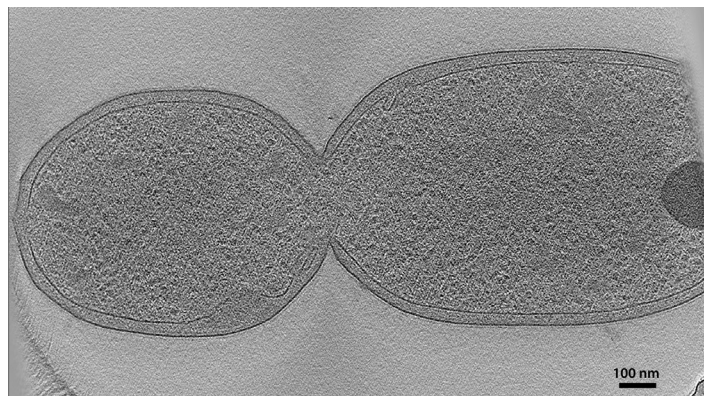
Identify: division septum



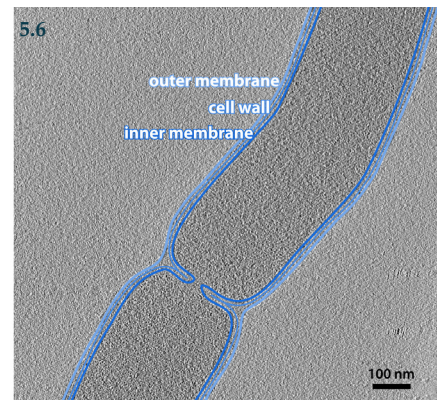
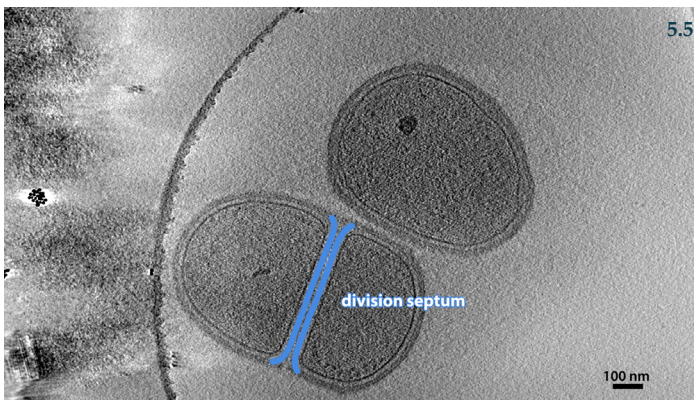
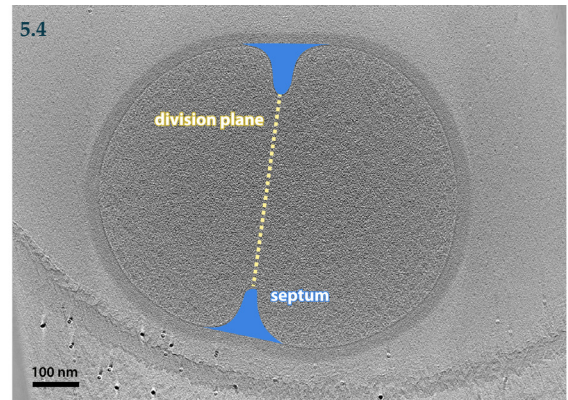
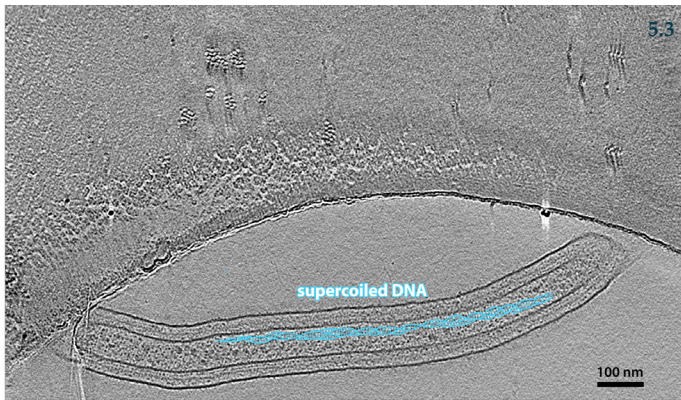
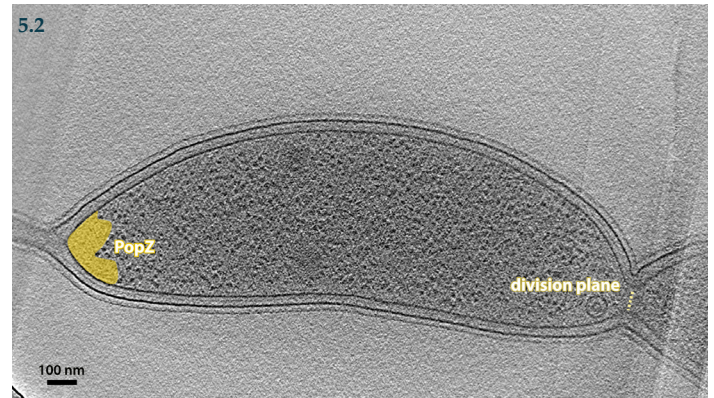
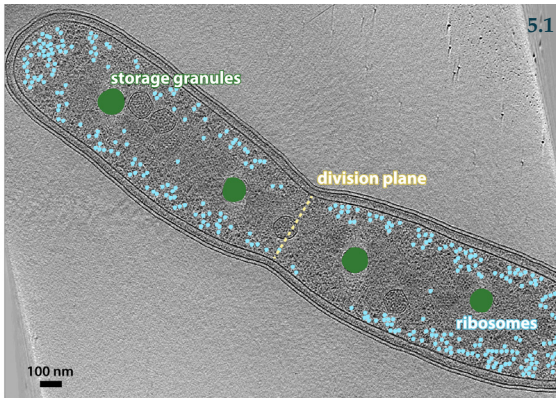
What mode of division?



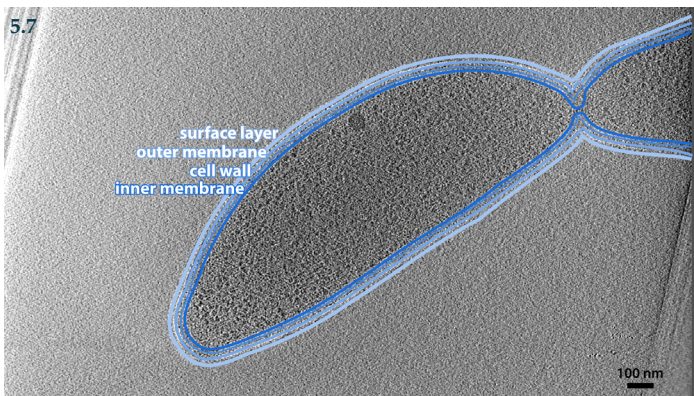
What mode of division?



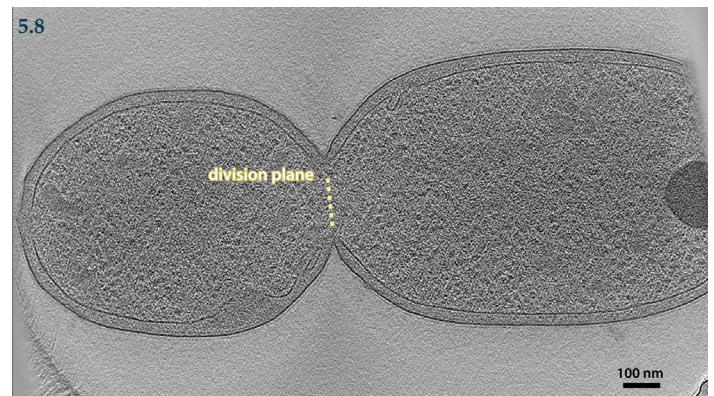
What mode of division?



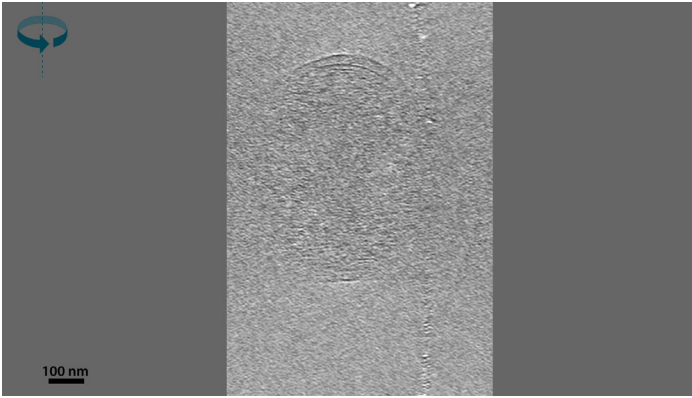
Division mode: fission



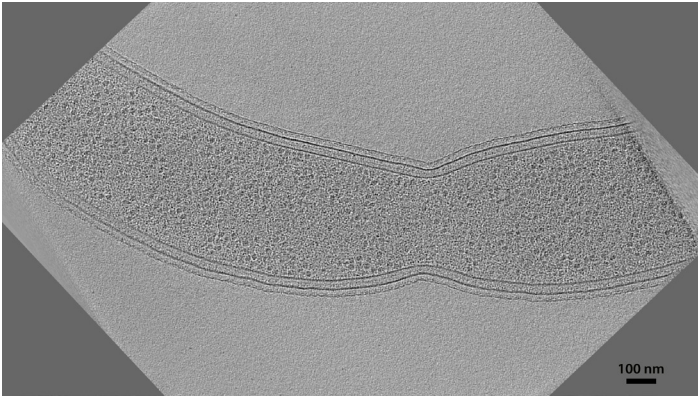
Division mode: fission



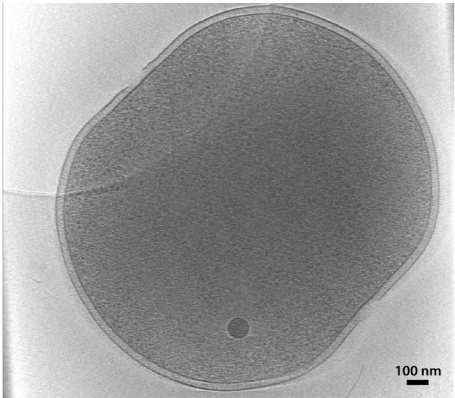
Division mode: budding



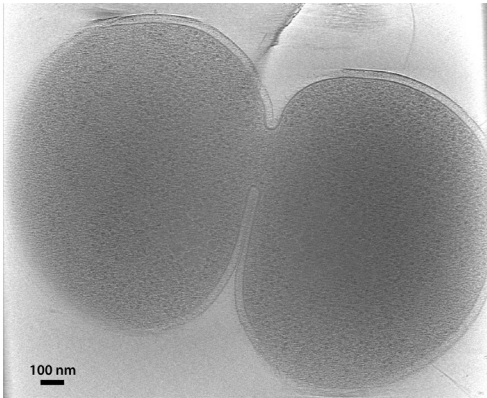
Identify: FtsZ filament



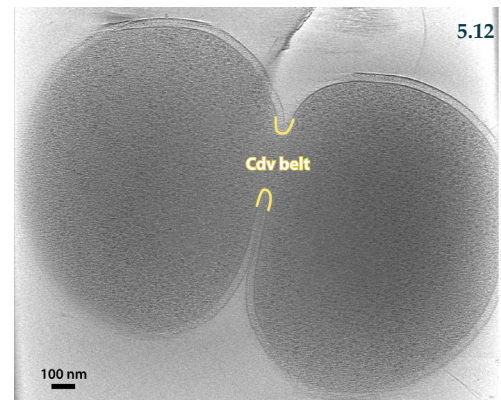
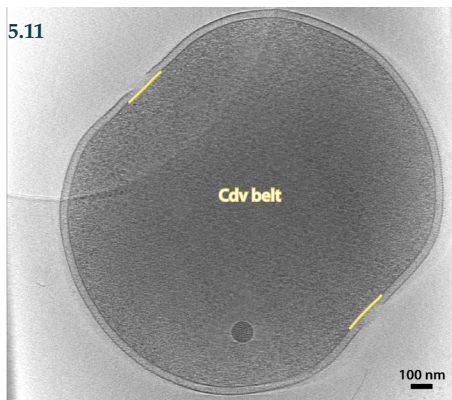
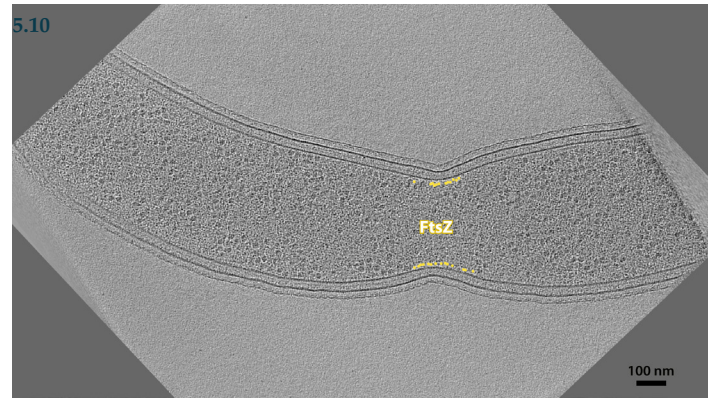
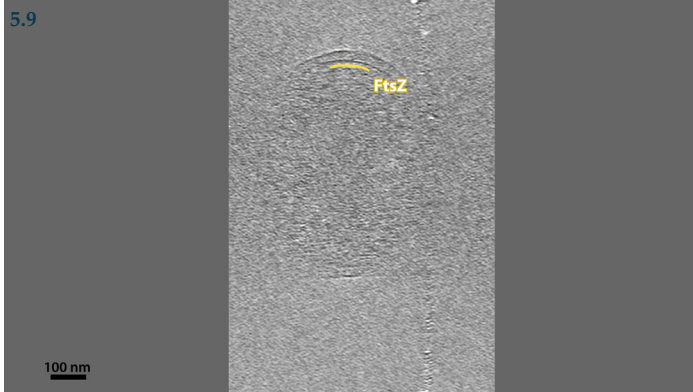
Identify: FtsZ filaments

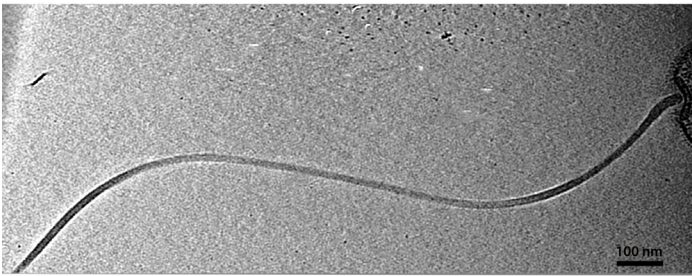


Identify: Cdv belt

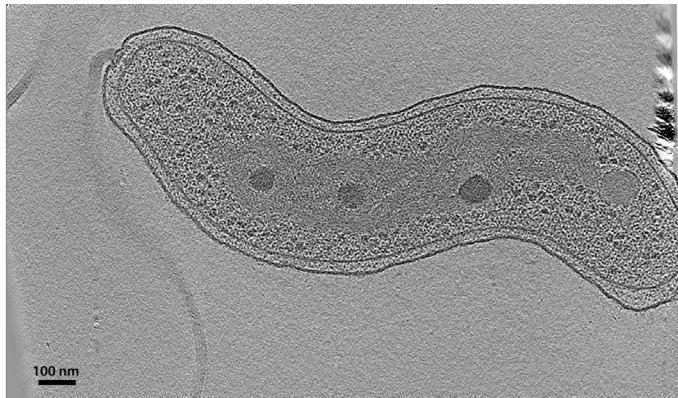


Identify: Cdv belt

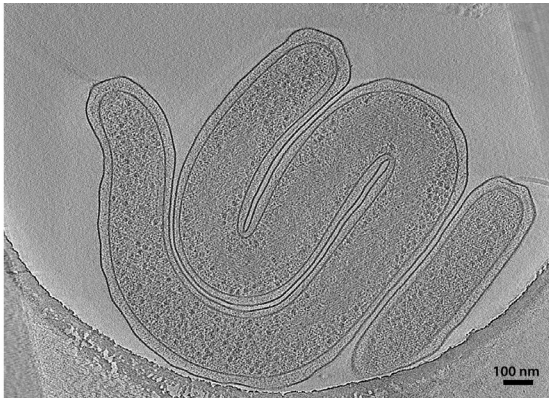




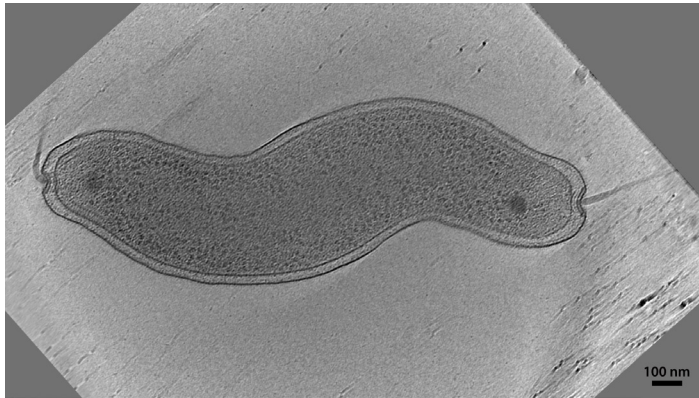
Identify: flagellar (1) motor, (2) hook, (3) filament



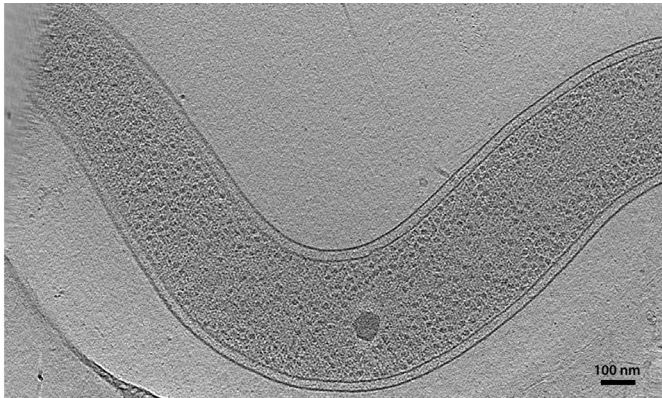
Identify: flagellum



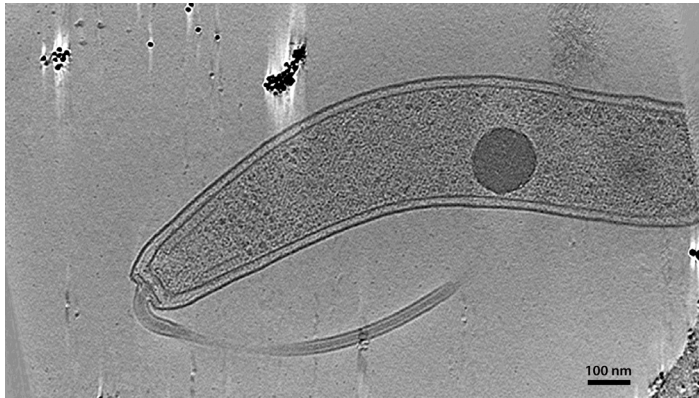
Identify: assembling flagellar motor



What flagella pattern?



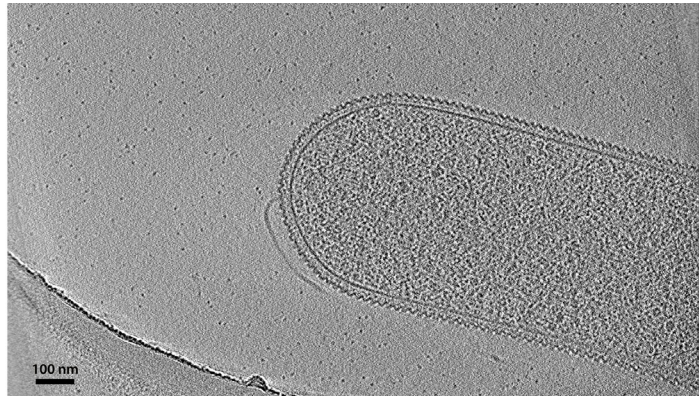
What flagella pattern?



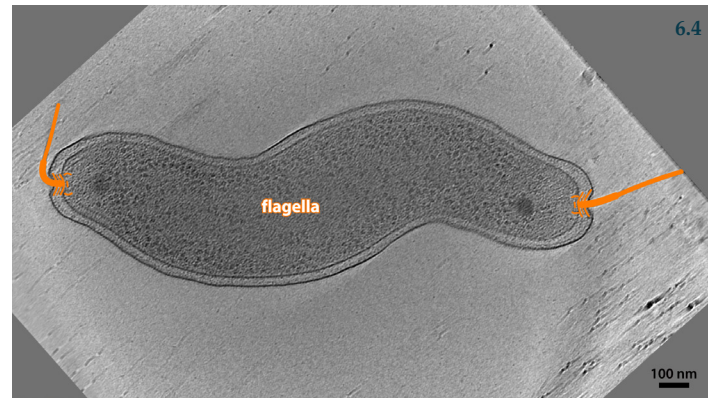
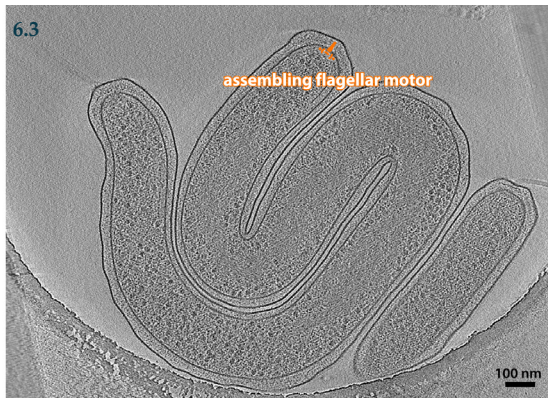
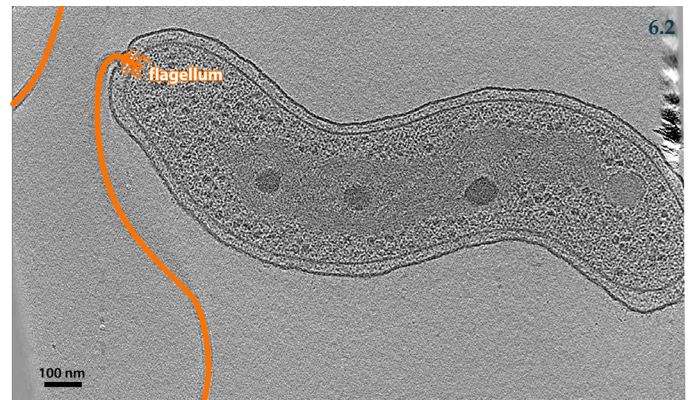
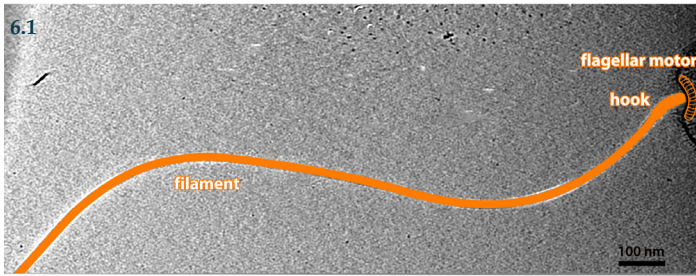
Identify: (1) flagellum; (2) flagellar sheath



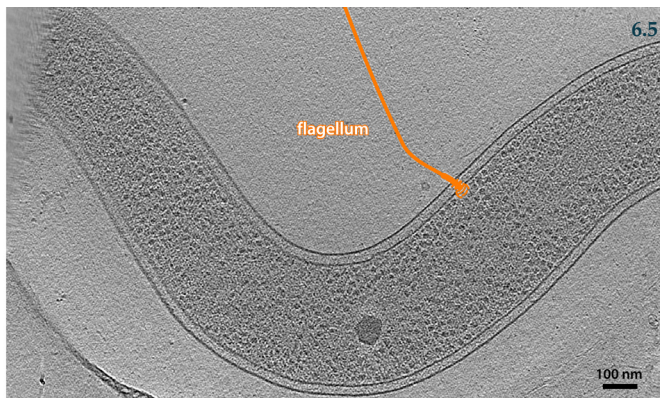
Identify: periplasmic flagellar motors



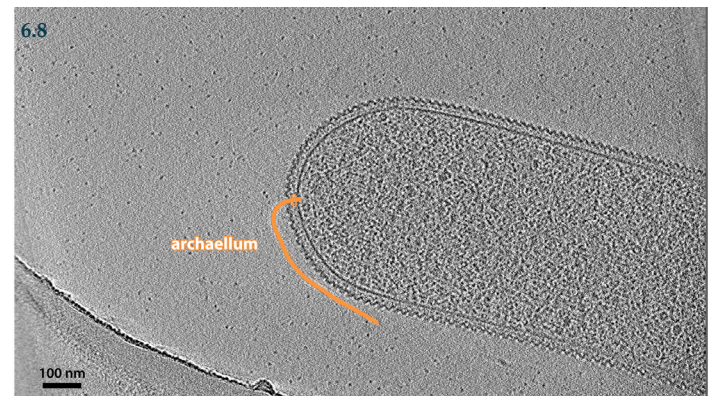
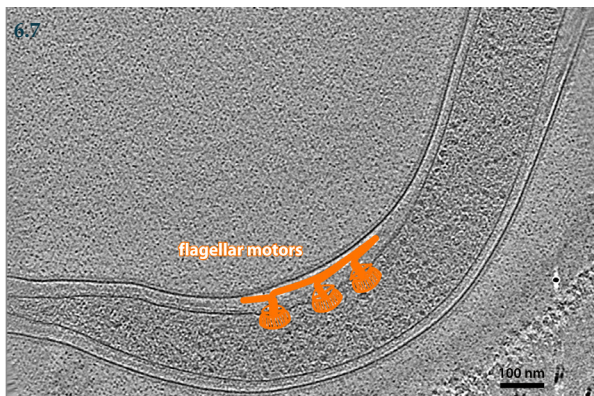
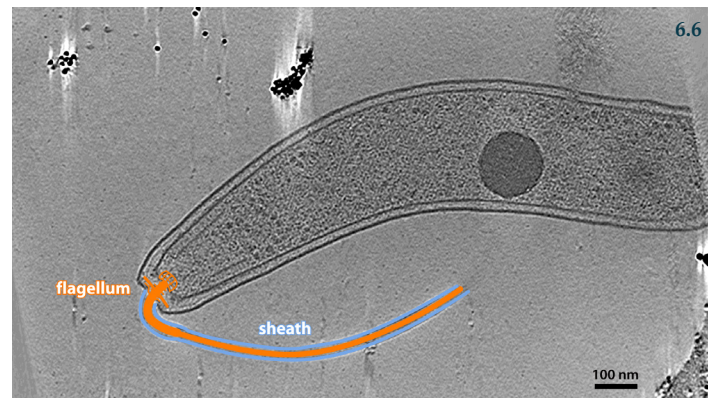
Identify: archaeellum

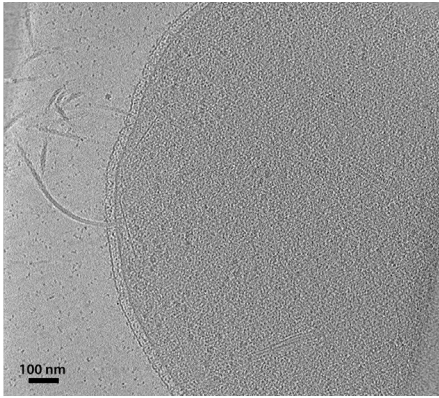


Flagella pattern: bipolar

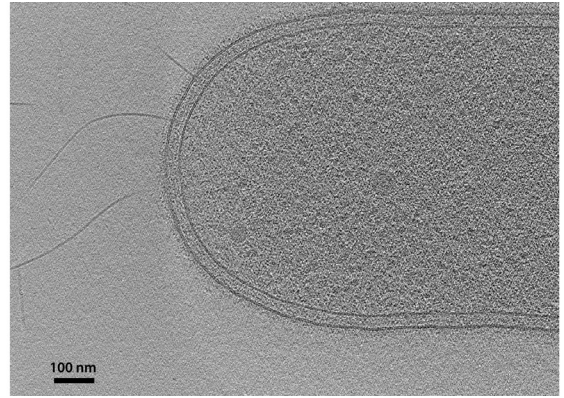


Flagella pattern: peritrichous

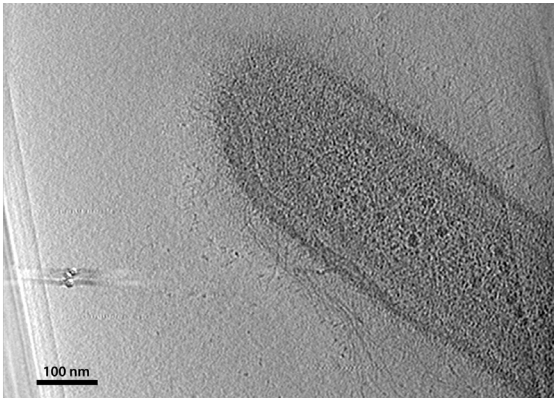




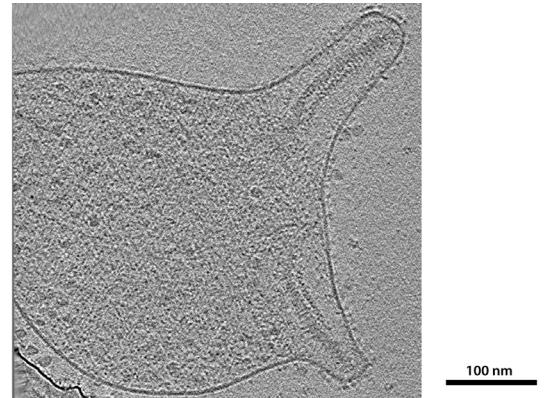
Identify: (1) archaella; (2) archaellar cone



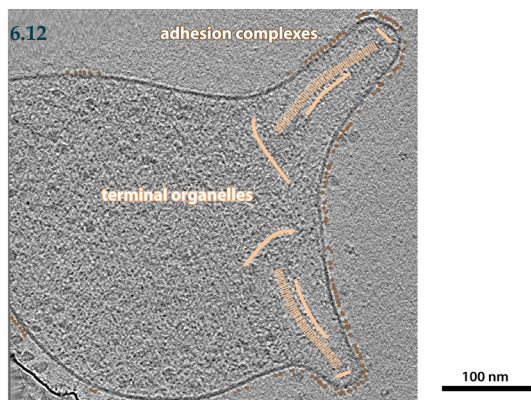
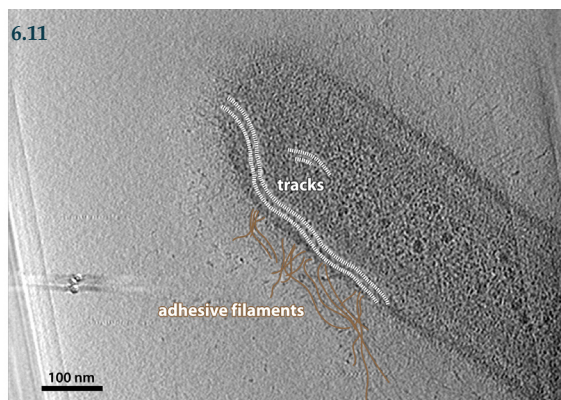
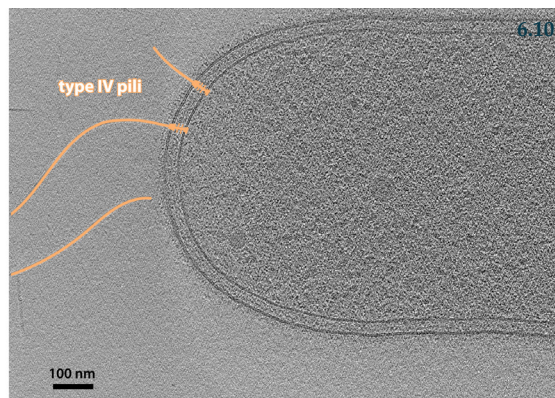
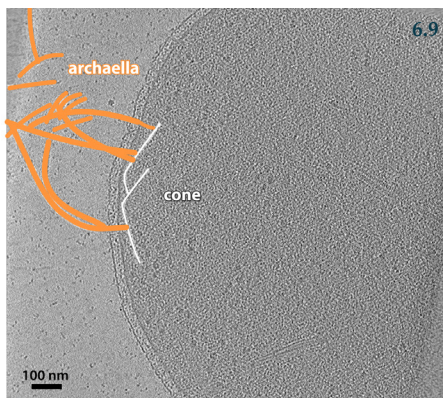
Identify: type IV pili

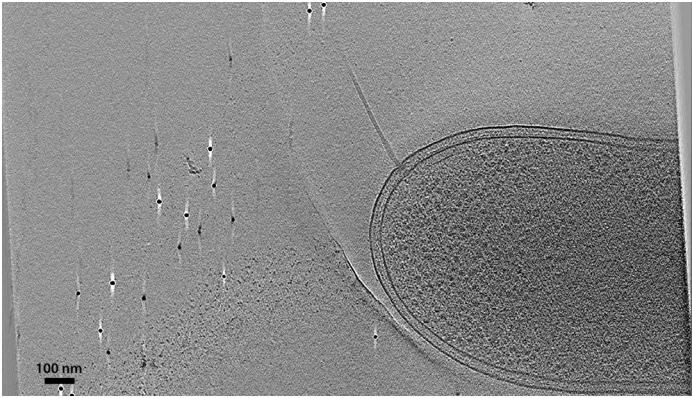


Identify: (1) type IX tracks; (2) adhesive filaments

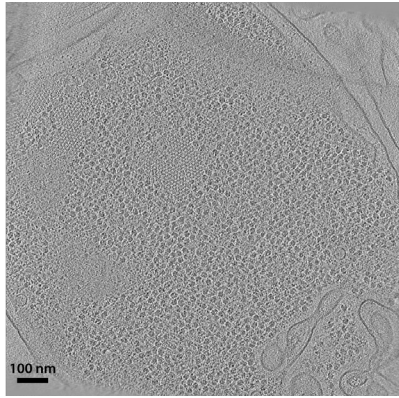


Identify: (1) terminal organelles; (2) adhesion complexes

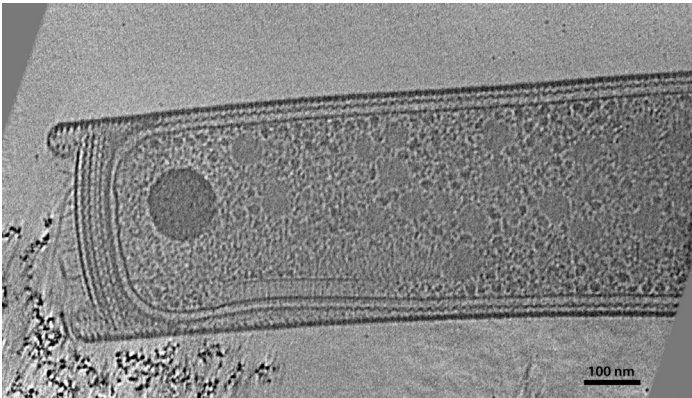




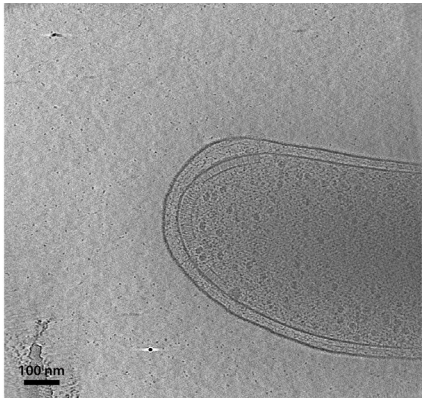
Identify: (1) flagellum; (2) chemosensory array



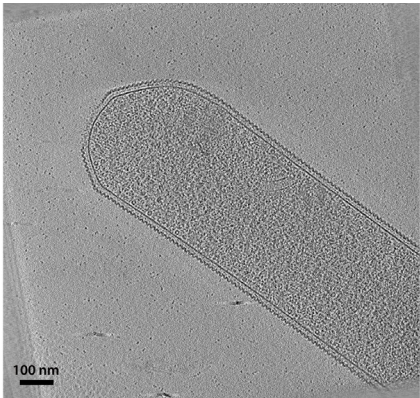
Identify: chemosensory arrays



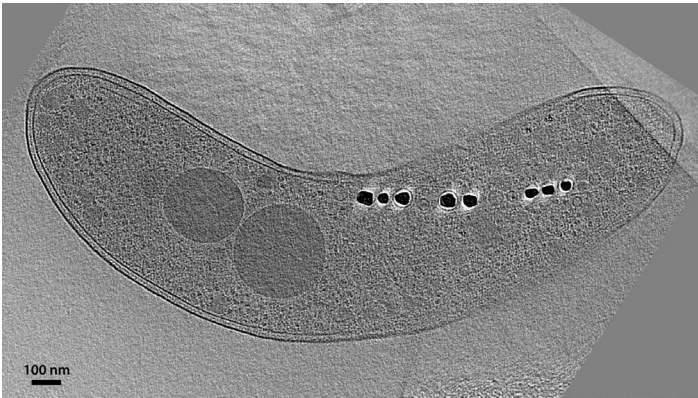
Identify: chemosensory array



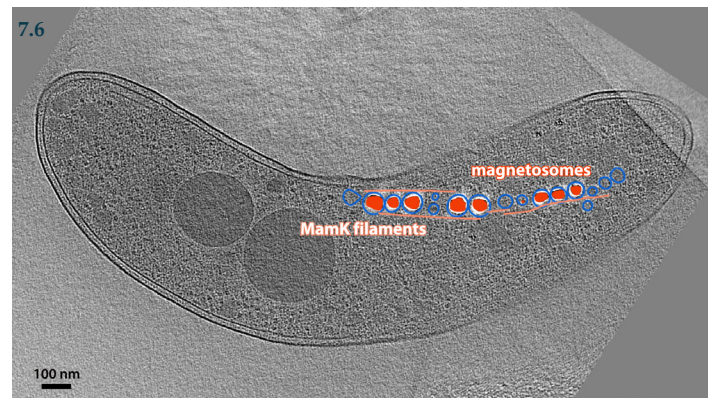
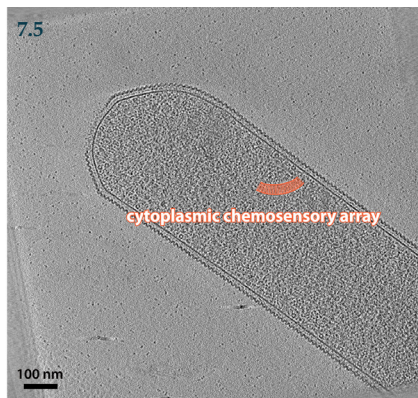
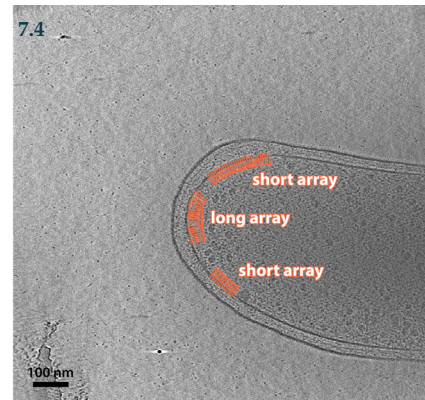
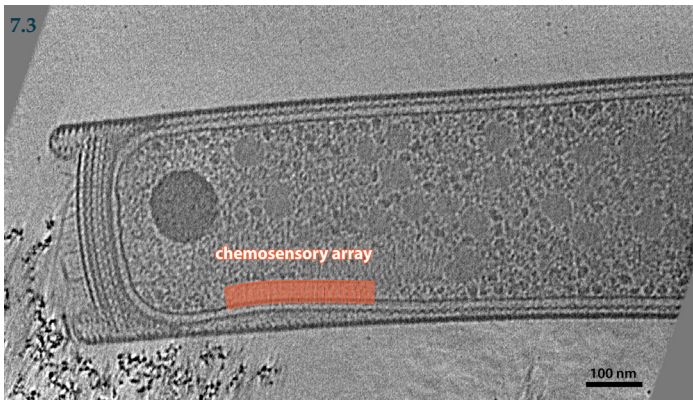
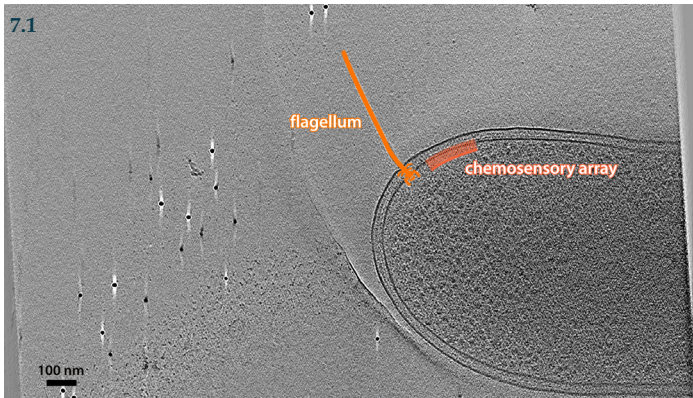
Identify: (1) long, (2) short chemosensory arrays

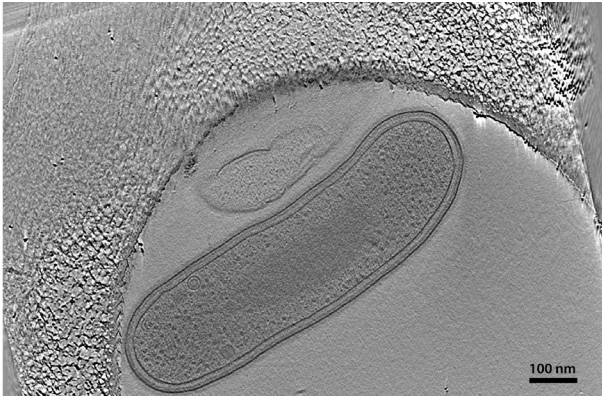


Identify: cytoplasmic chemosensory array

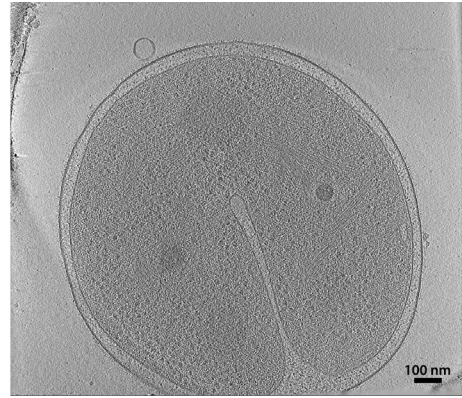


Identify: (1) magnetosomes; (2) MamK filaments

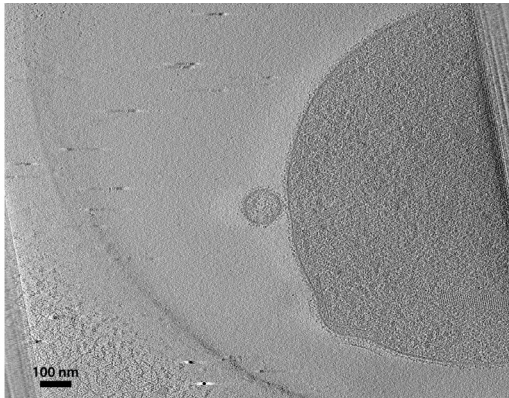




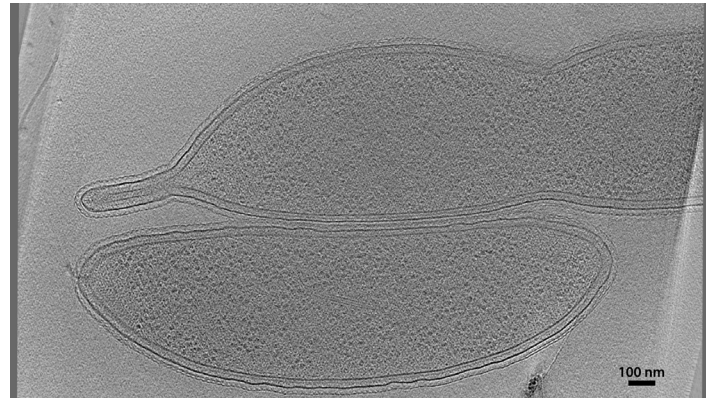
Identify: condensed nucleoid



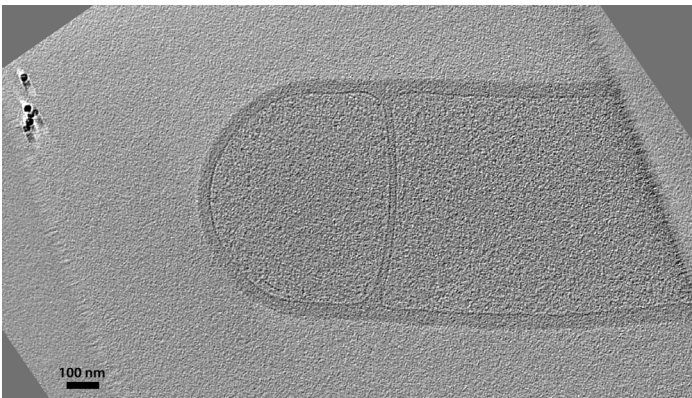
Identify: RecA/DNA filaments



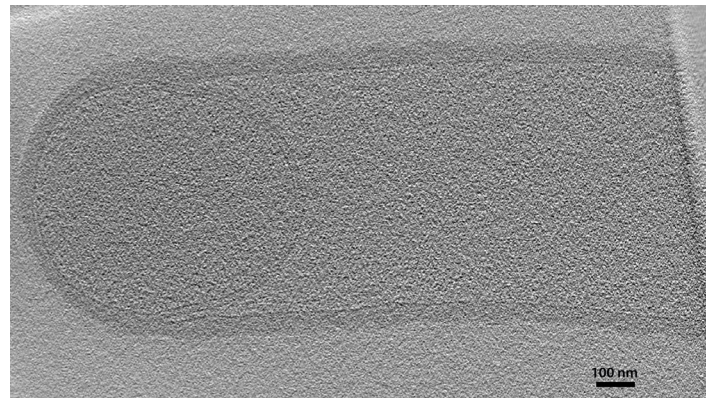
Identify: (1) RadA/DNA filaments; (2) extracellular vesicle



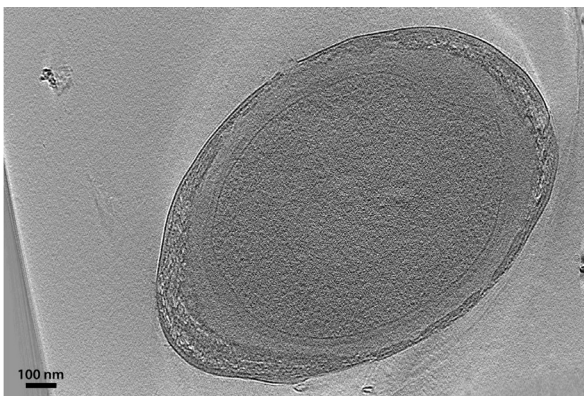
Identify: (1) stalked cell; (2) swarmer cell



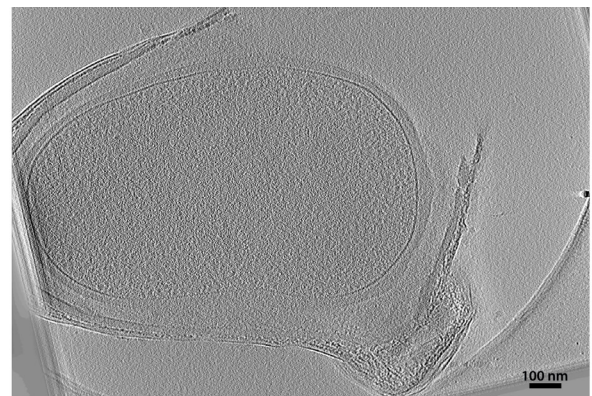
Identify: sporulation septum



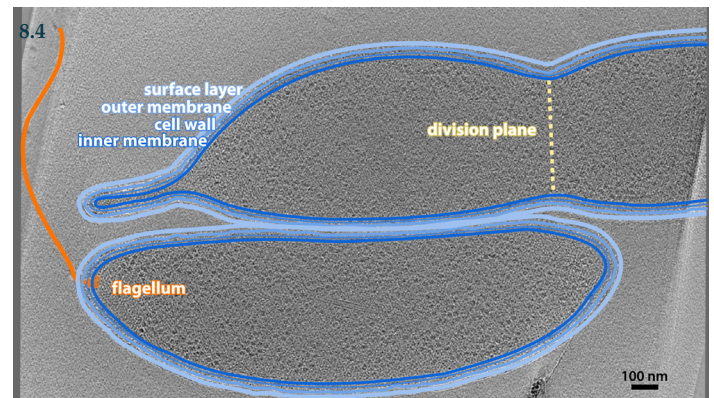
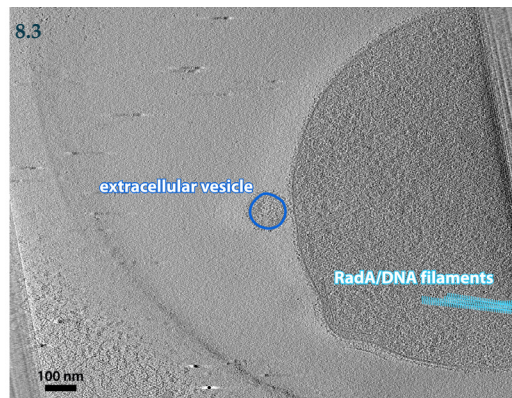
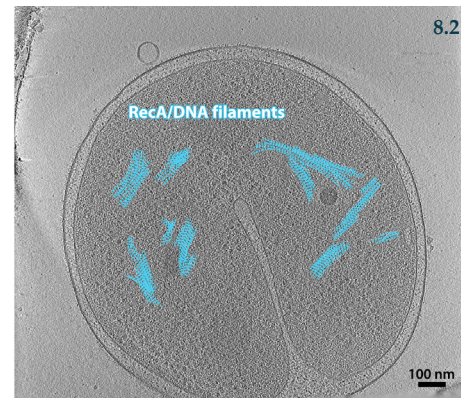
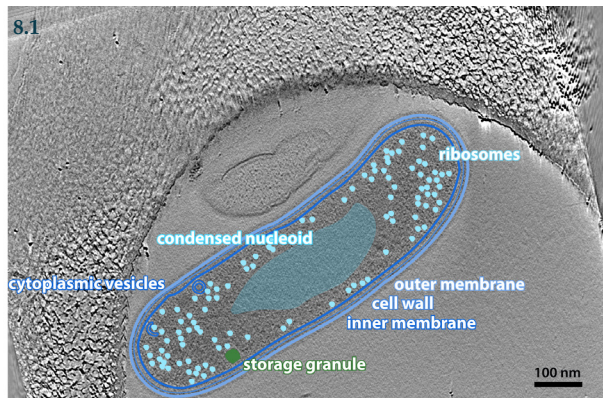
Identify: sporulation septum



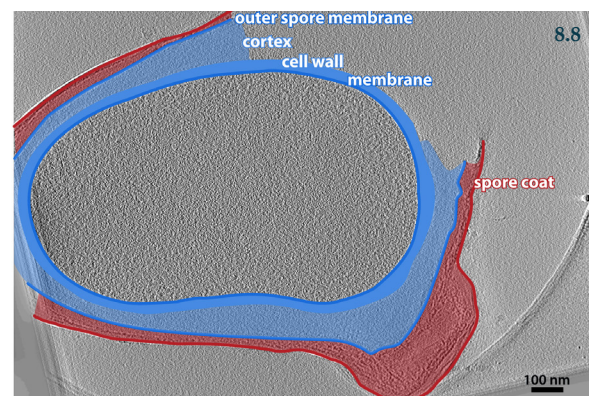
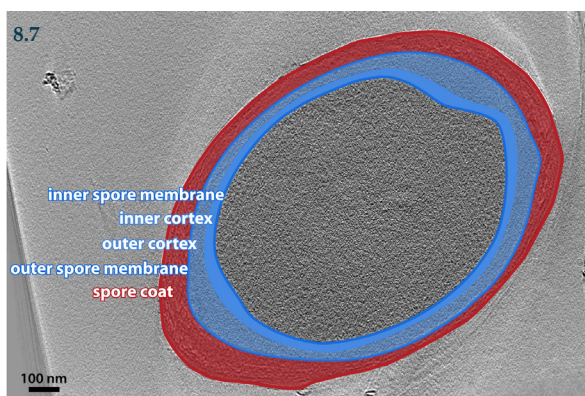
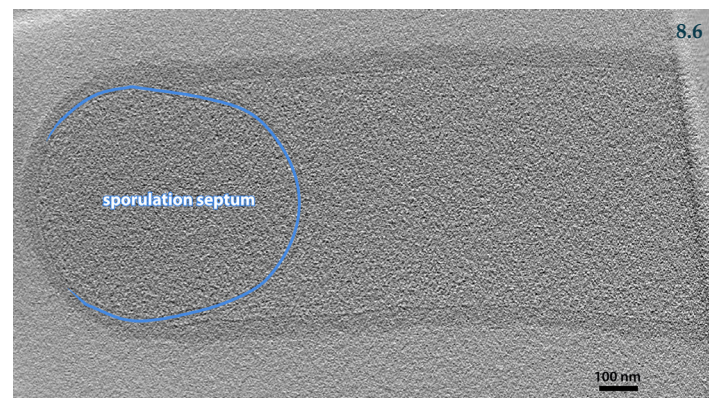
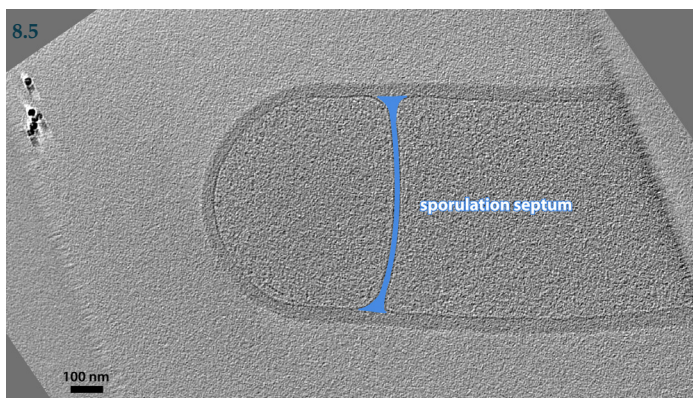
Identify: (1) inner, (2) outer membranes; (3) inner; (4) outer cortex; (5) coat

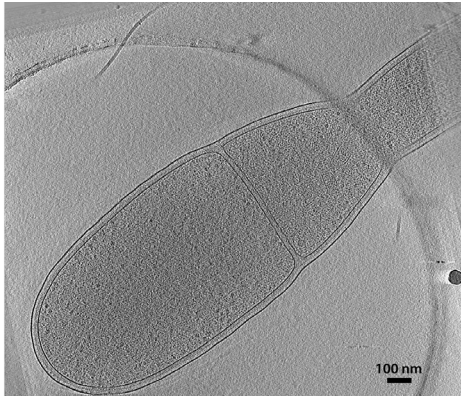


Identify: (1) membrane; (2) cell wall; (3) cortex; (4) spore coat

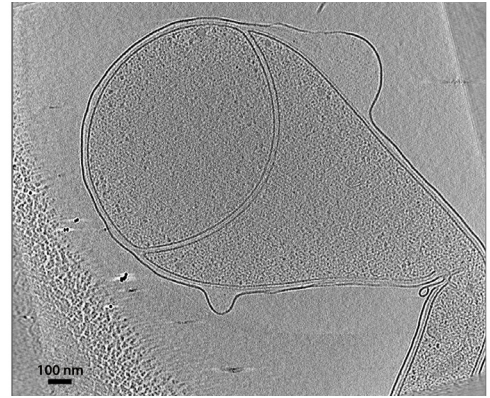


Stalked cell, top; swarmer cell, bottom

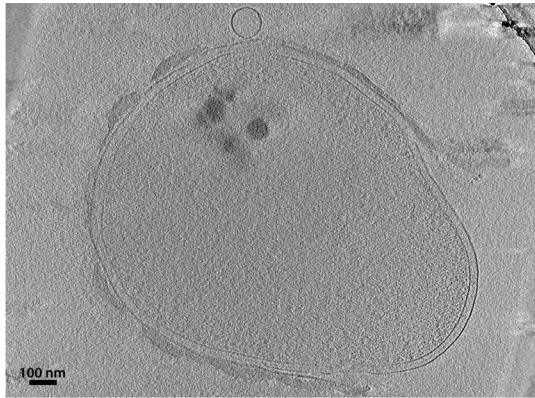




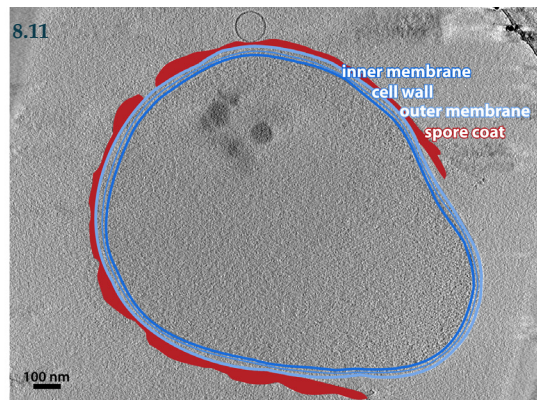
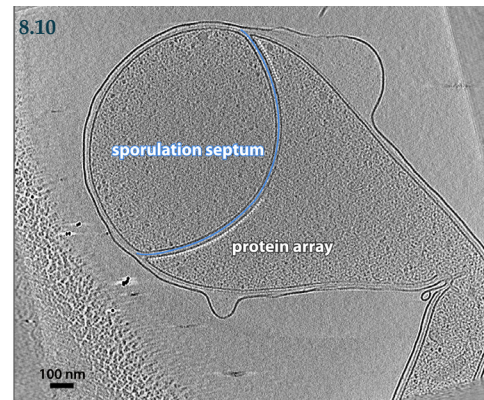
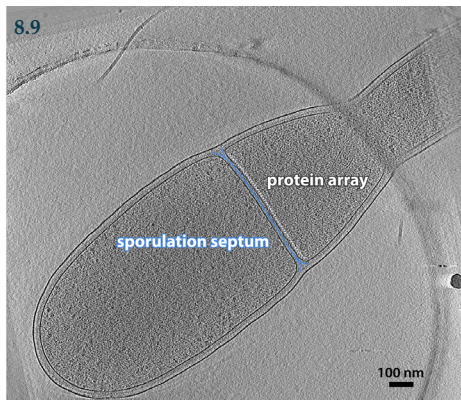
Identify: (1) sporulation septum; (2) protein array

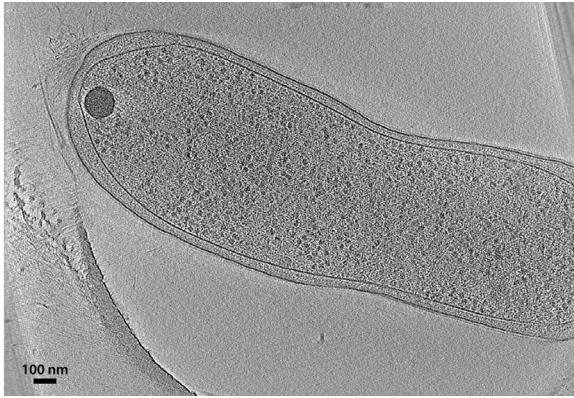


Identify: (1) sporulation septum; (2) protein array



Identify: (1) inner, (2) outer membranes; (3) cell wall; (4) spore coat

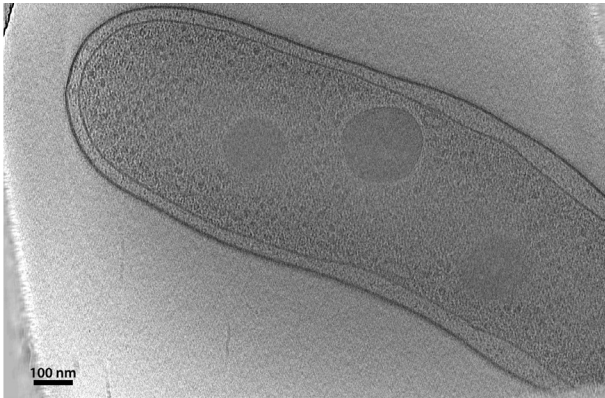




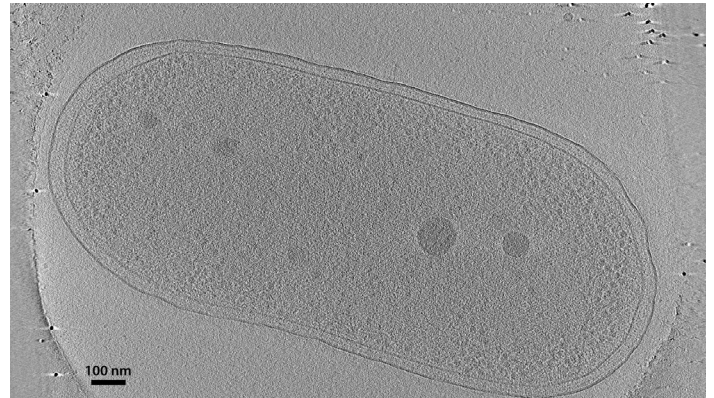
Identify: (1) unipolar polysaccharide; (2) cellulose fibrils



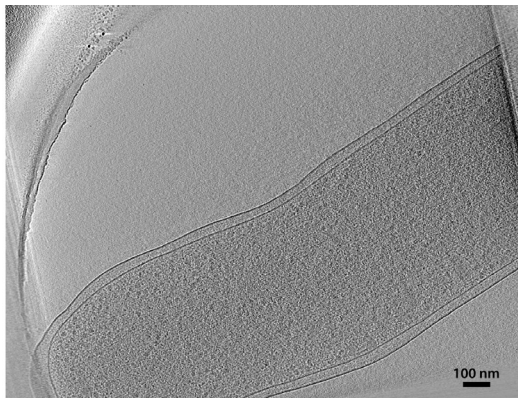
Identify: cellulose fibrils



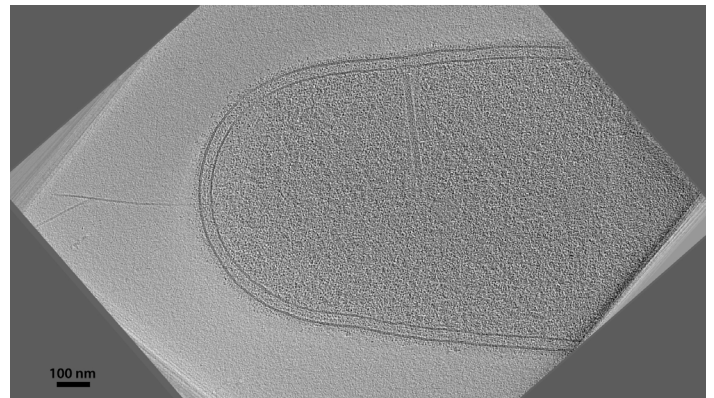
Identify: (1) type II, (2) type IV secretion systems



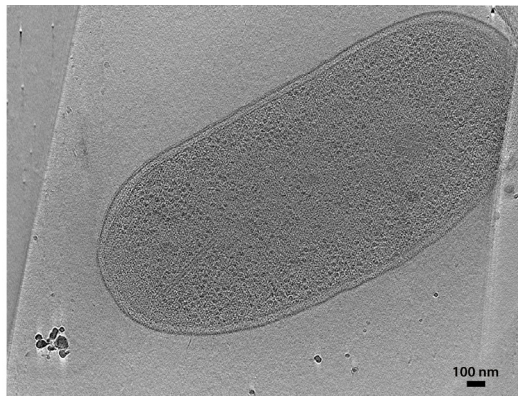
Identify: (1) division plane; (2) division septum



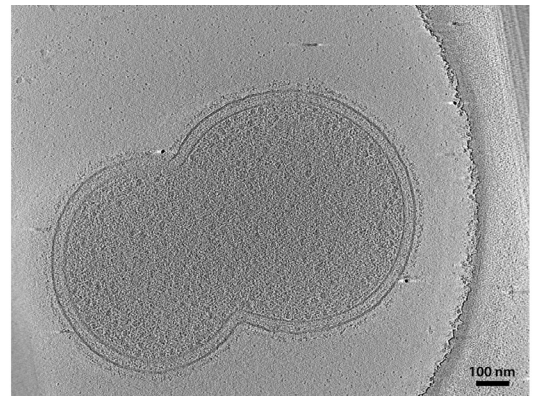
Identify: division septum



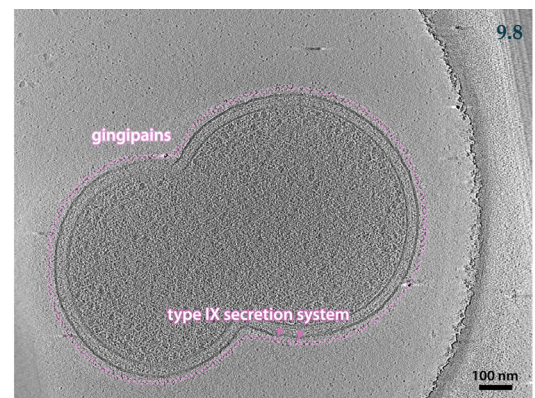
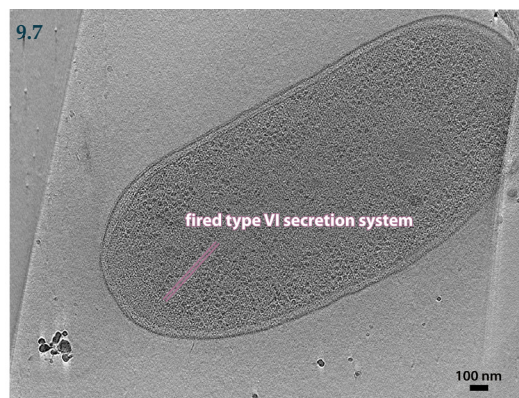
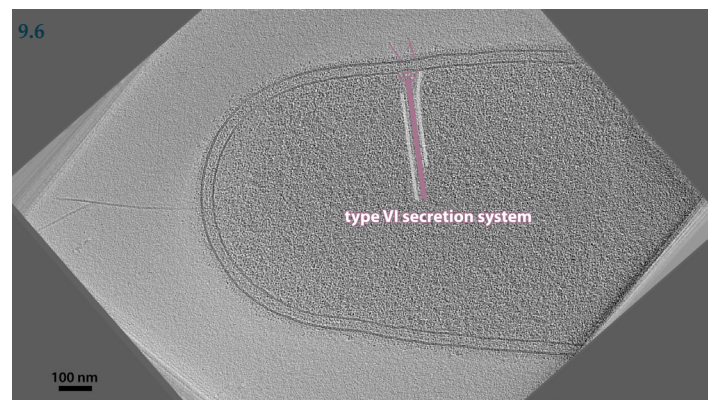
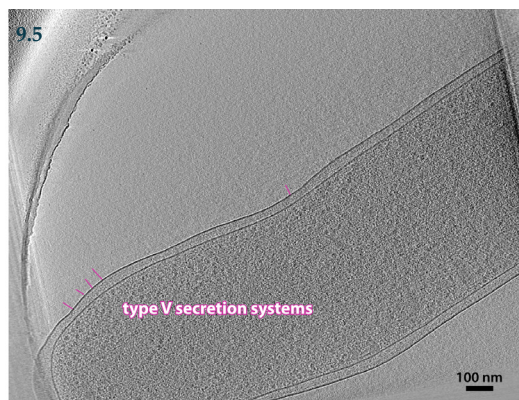
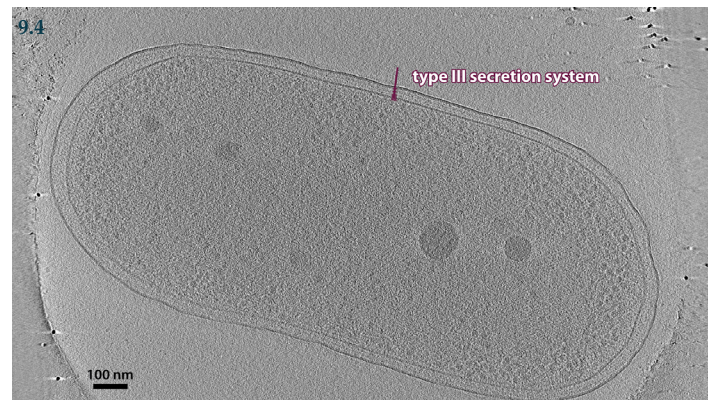
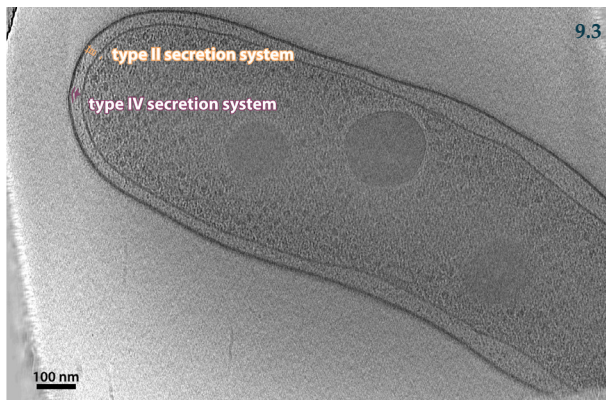
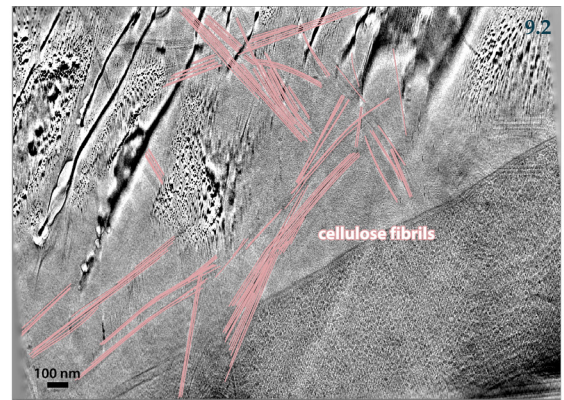
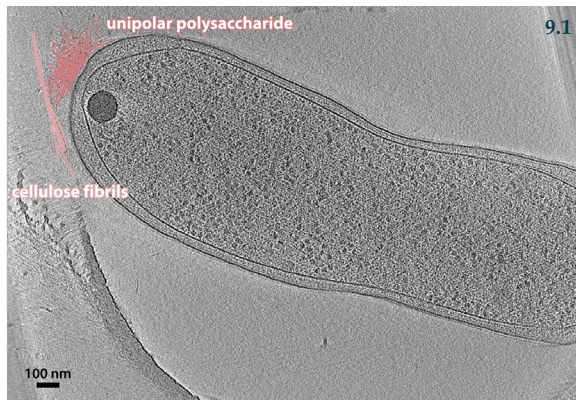
What mode of division?

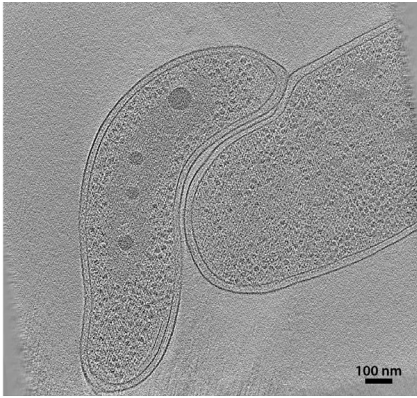


What mode of division?

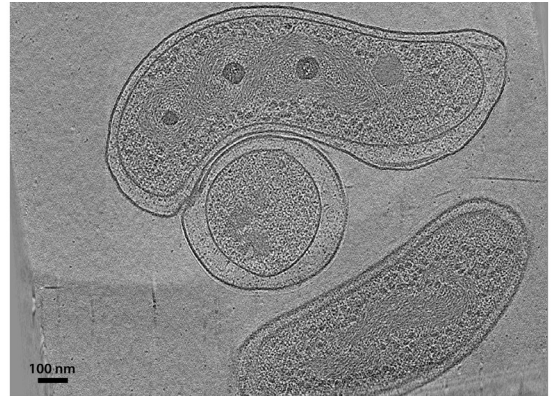


What mode of division?

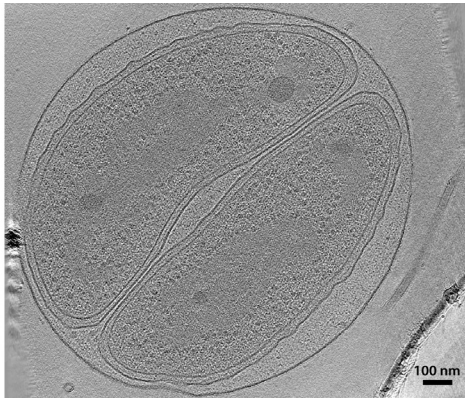




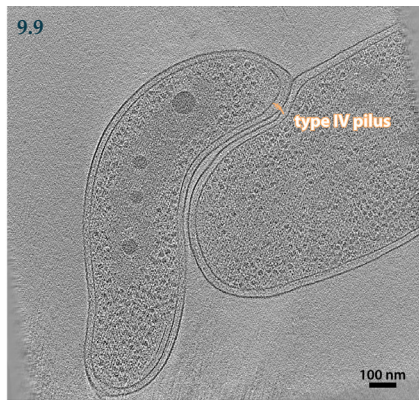
Identify: (1) predator; (2) prey; (3) type IV pilus



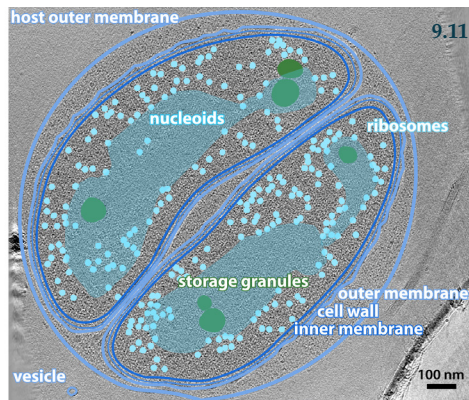
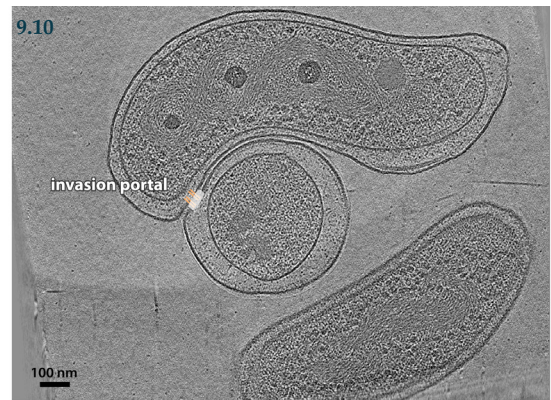
Identify: invasion portal

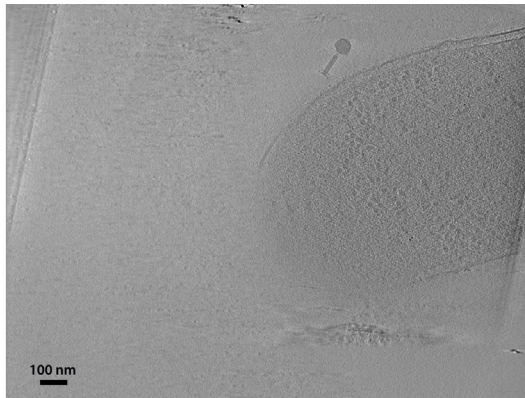


Identify: (1) host outer membrane; (2) condensed nucleoids

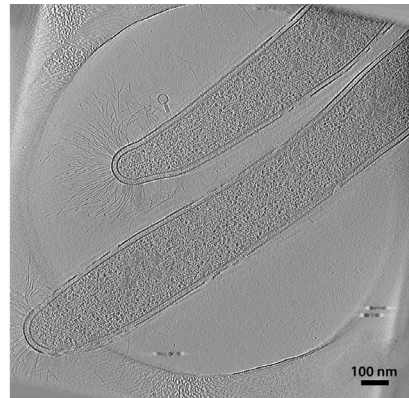


Predator, left; prey, right

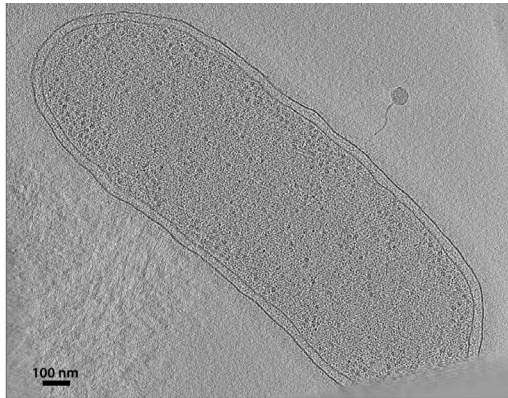




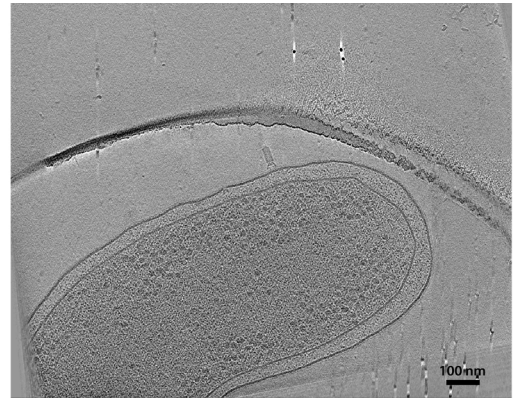
Identify: phage (1) capsid, (2) tail, (3) tail fibers



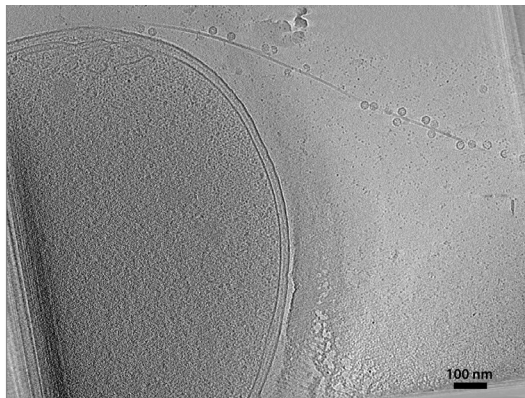
Identify: phage (1) capsid, (2) tail, (3) tail fibers



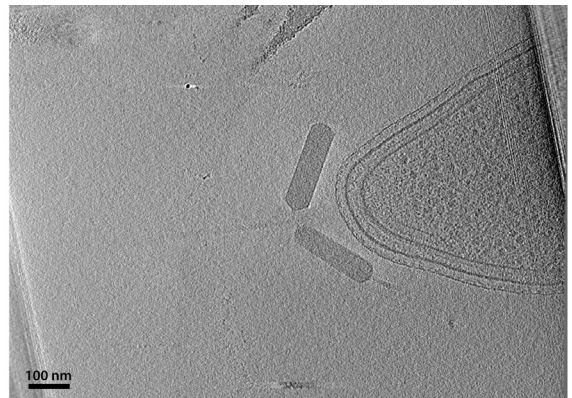
Identify: phage (1) capsid, (2) tail, (3) tail fibers



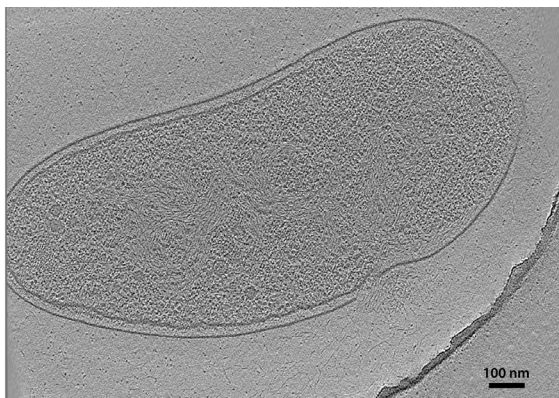
Identify: phage (1) capsid, (2) tail fibers



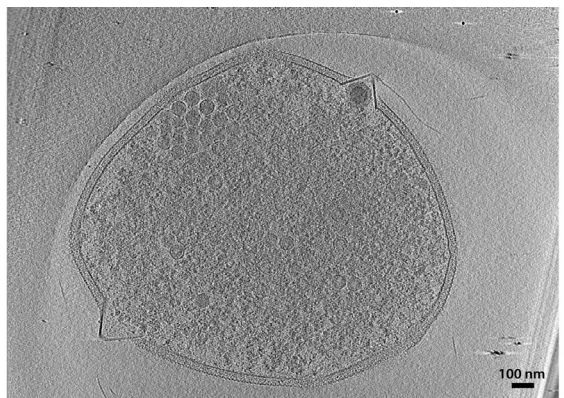
Identify: (1) pilus; (2) phage capsids



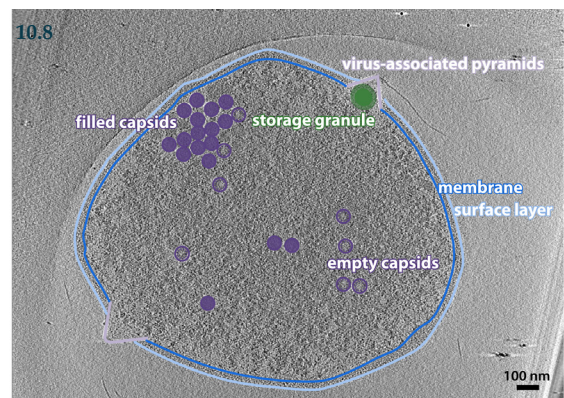
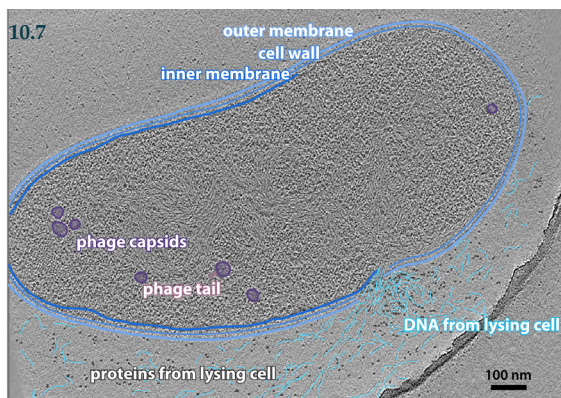
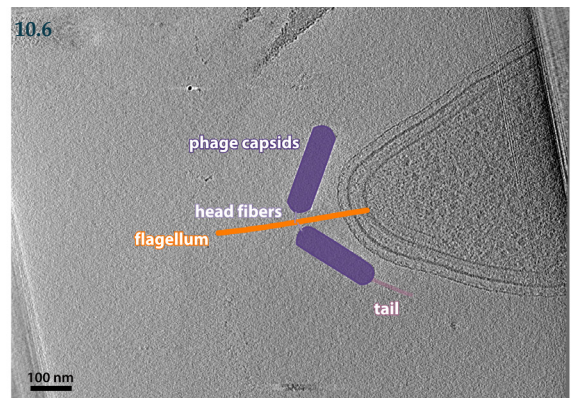
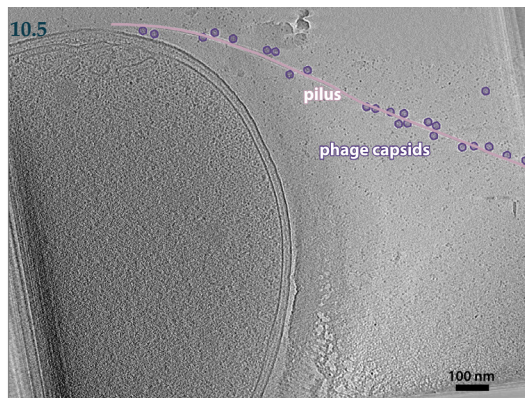
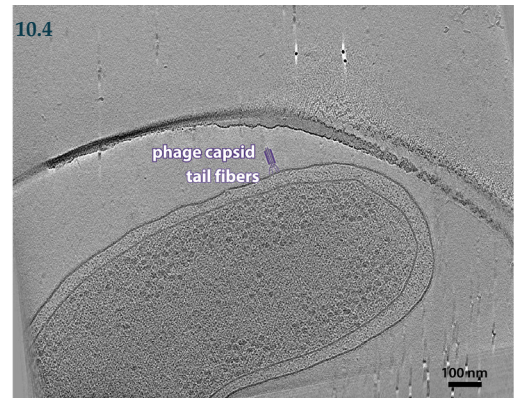
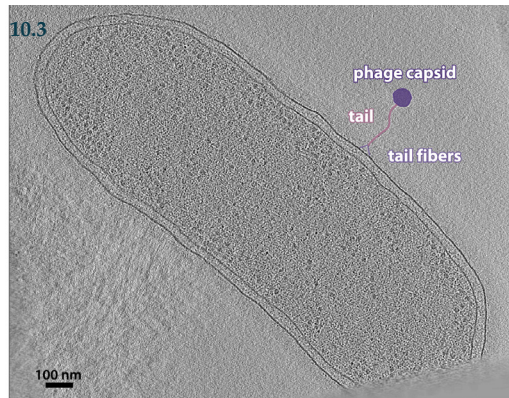
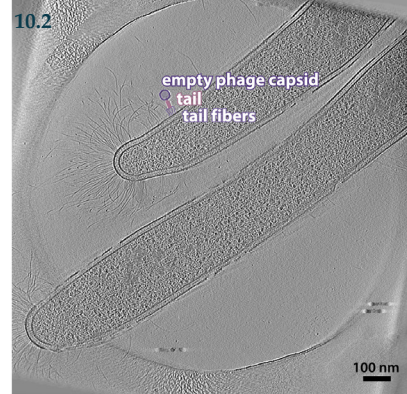
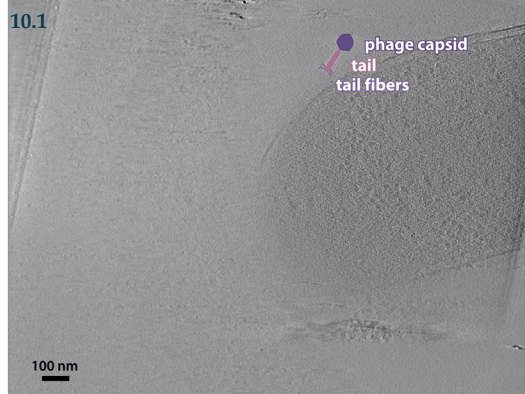
Identify: (1) flagellum; phage (2) capsids, (3) head fibers, (4) tail

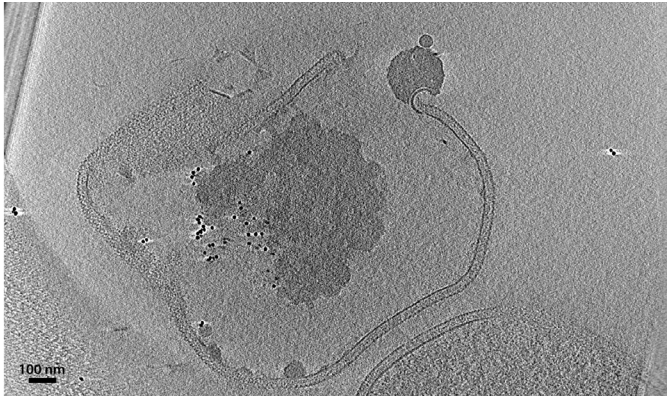


Identify: phage (1) capsids, (2) tail; (3) DNA

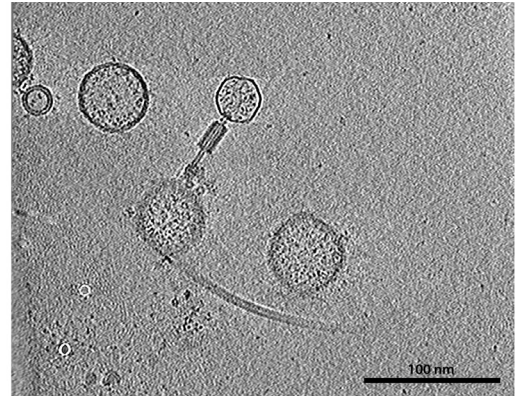


Identify: (1) empty, (2) filled phage capsids; (3) virus-associated pyramids





Identify: virus-associated pyramid



Identify: phage (1) capsid, (2) tail, (3) tail fibers; (4) vesicles

